



SPLASH PLAY PROPOSAL

FUN BUILDS

CIVIC PARK, BURNEY, CA



WATERPLAY

BY MAKE



**FUN FOR
ALL AGES!**

YOUR NEW SPLASH PAD FOR BURNEY!

HIGHLIGHTS:

NATURAL BASED PLAY

SENSORY PLAY!

ACTIVE PLAY

creative play

risky play

IMAGINATIVE PLAY

SOCIAL PLAY!

INCLUSIVE

FUN BUILDS

CIVIC PARK,
BURNEY, CA

 **WATERPLAY**



OPTION 1

FUN BUILDS

CIVIC PARK,
BURNEY, CA

 **WATERPLAY**



FUN BUILDS

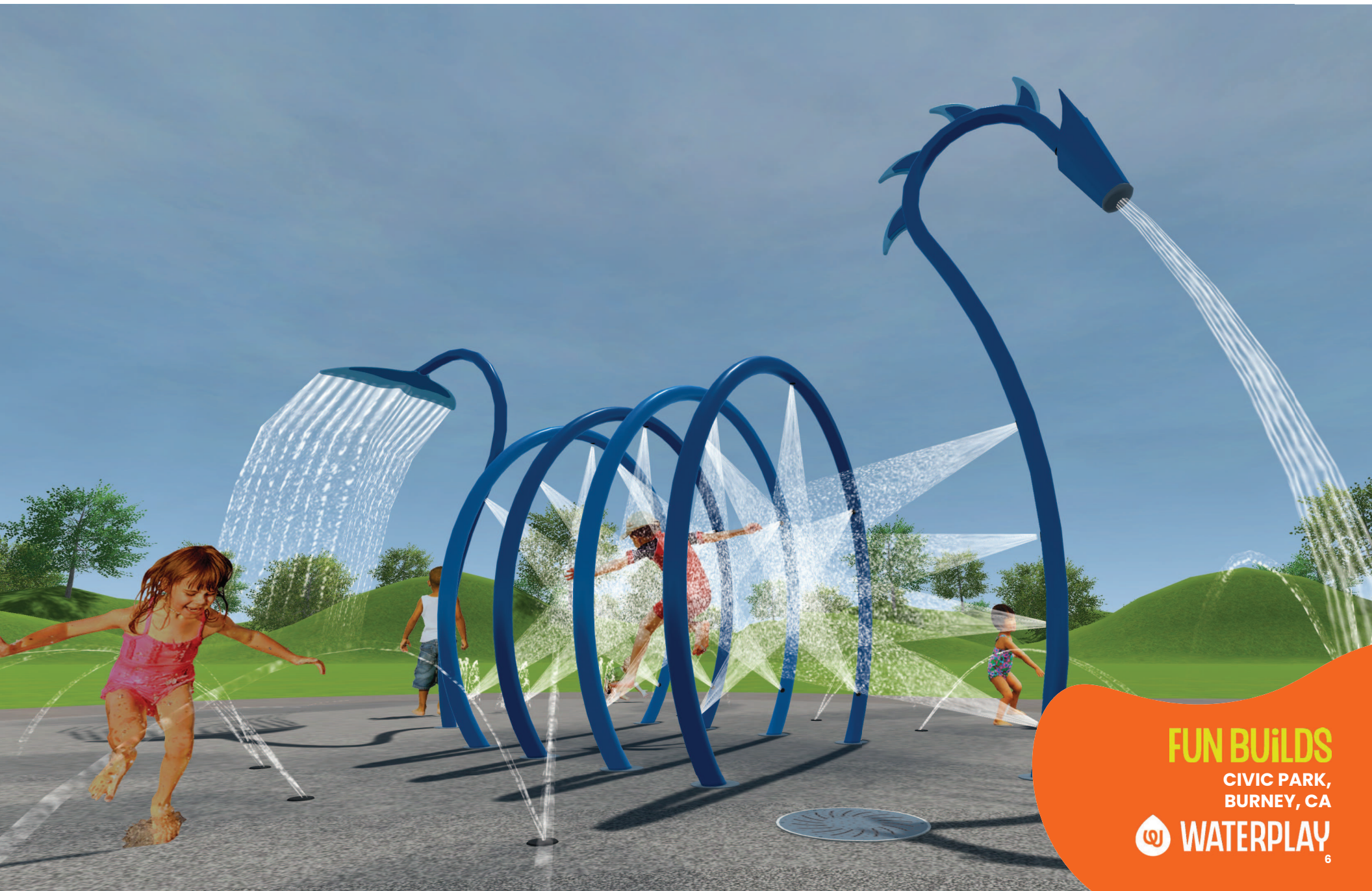
CIVIC PARK,
BURNEY, CA

 **WATERPLAY**



LEARN,
DISCOVER,
PLAY!

FUN BUILDS
CIVIC PARK,
BURNEY, CA
 **WATERPLAY**
5



FUN BUILDS

CIVIC PARK,
BURNEY, CA

 **WATERPLAY**



FUN BUILDS

CIVIC PARK,
BURNEY, CA

 **WATERPLAY**



FUN BUILDS

CIVIC PARK,
BURNEY, CA

 **WATERPLAY**



SEEK,
AIM,
SPRAY!

FUN BUILDS

CIVIC PARK,
BURNEY, CA

 **WATERPLAY**

PLAY ZONES

#FREEPLAY

Waterplay's play zones are thoughtfully designed to allow waterplayers the ability to choose their adventures, engagement, and set their own boundaries.



EXPLORATION ZONE

TEAM UP AND TAKE ON CHALLENGES, THIS UNIVERSAL SPACE INVITES GROUP FUN!

- Play elements and water effects that spark inquiry and encourage physical movement.
- Multiple opportunities for collaboration and interactive play.
- Provides a stepping stone between the discovery and adventure areas for a seamless play experience.



DISCOVERY ZONE

A THOUGHTFUL AND CONTEMPLATIVE SPACE THAT MOVES AT A MINDFUL PACE.

- Gentle water effects for reduced stimulation.
- Cognitive play opportunities for deep learning and flexible thinking for individual and group play.
- Situated along the perimeter and away from the adventure zone for a relaxed play experience.



DEVELOPMENT ZONE

A SAFE SPACE FOR BUDDING WATERPLAYERS TO GROW, LEARN AND DISCOVER.

- Predictable and gentle water effects for safe exploration.
- Inviting shapes and friendly characters and water displays to encourage interaction.
- Opportunities for collaborative and parallel play.

PLAY ZONES

EXPLORATION ZONE



- WHALE CANNON
- OGO
- SPIRAL TUNNEL
- WHALE TAIL

DISCOVERY ZONE



- GEYSER GROUND SPRAY
- SPLIT SPURT GROUND SPRAY

DEVELOPMENT ZONE



- BUTTER CUP GROUND SPRAYS
- SOLO SPURT GROUND SPRAYS
- FOUNTAIN MOUNTAIN GROUND SPRAYS



FUN BUILDS

CIVIC PARK,
BURNEY, CA



WATERPLAY



OPTION 2

FUN BUILDS

CIVIC PARK,
BURNEY, CA

 **WATERPLAY**



FUN BUILDS

CIVIC PARK,
BURNEY, CA



WATERPLAY



**ON THE
SPLASH PAD,
WHERE I
SPEND MOST
OF MY DAYS!**

FUN BUILDS

CIVIC PARK,
BURNEY, CA

 **WATERPLAY**



FUN BUILDS

CIVIC PARK,
BURNLEY, CA

 **WATERPLAY**

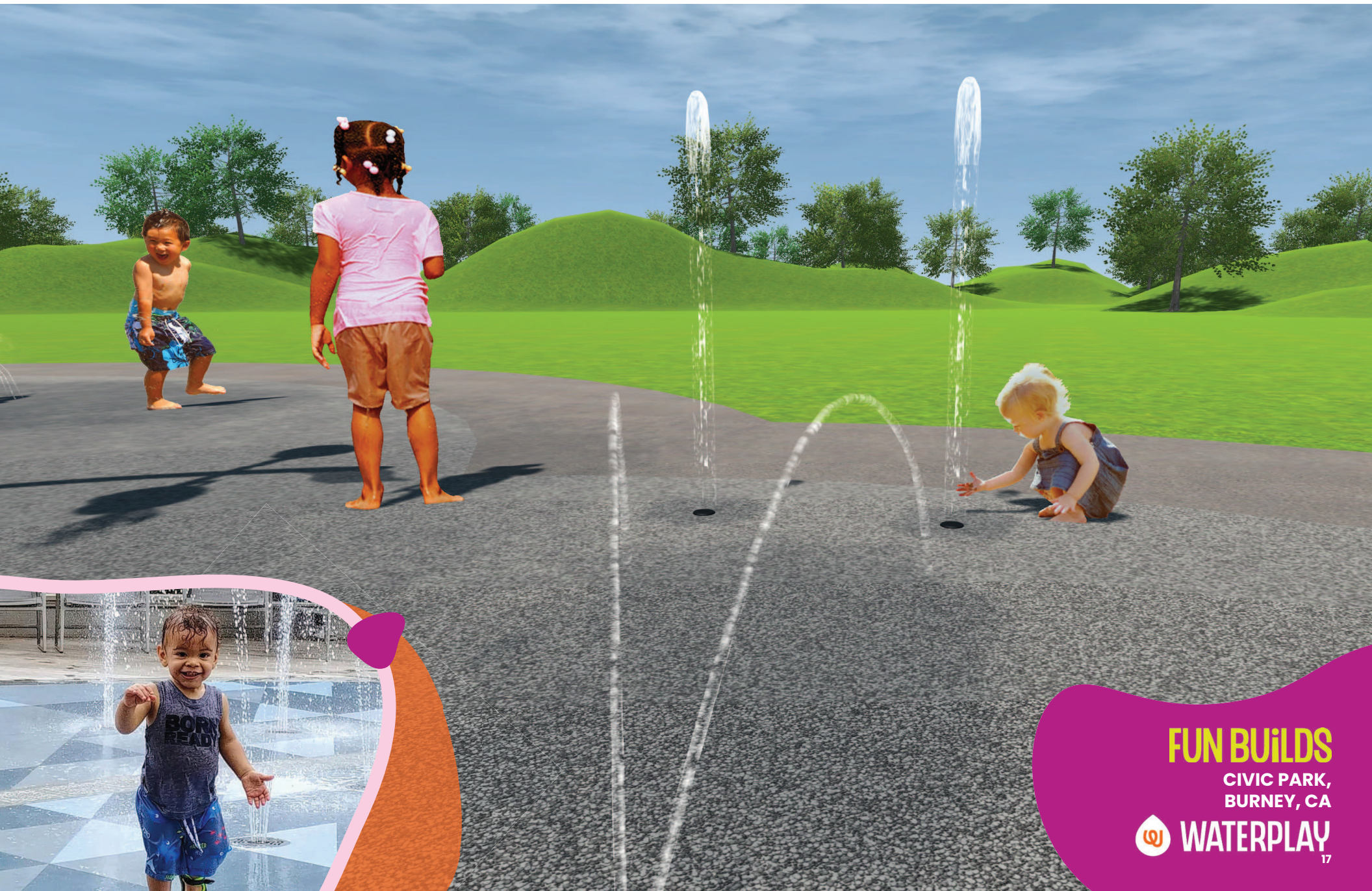


FUN BUILDS

CIVIC PARK,
BURNEY, CA



WATERPLAY



FUN BUILDS

CIVIC PARK,
BURNEY, CA



WATERPLAY



FUN BUILDS

CIVIC PARK,
BURNEY, CA

 **WATERPLAY**



**Movement in play
creates a sense of space
and place to keep bodies
strong and healthy.**

FUN BUILDS

CIVIC PARK,
BURNEY, CA

 **WATERPLAY**

PLAY ZONES

#FREEPLAY

Waterplay's play zones are thoughtfully designed to allow waterplayers the ability to choose their adventures, engagement, and set their own boundaries.



ADVENTURE ZONE

BIG SPLASHES AND NON-STOP ACTIVITY. THIS ZONE IS BURSTING WITH ENERGY.

- Big water effects and continuous action energize the senses and creates excitement.
- Fast pace encourages quick-thinking and promotes movement.
- Centrally placed and ready for action!



EXPLORATION ZONE

TEAM UP AND TAKE ON CHALLENGES, THIS UNIVERSAL SPACE INVITES GROUP FUN!

- Play elements and water effects that spark inquiry and encourage physical movement.
- Multiple opportunities for collaboration and interactive play.
- Provides a stepping stone between the discovery and adventure areas for a seamless play experience.



DISCOVERY ZONE

A THOUGHTFUL AND CONTEMPLATIVE SPACE THAT MOVES AT A MINDFUL PACE.

- Gentle water effects for reduced stimulation.
- Cognitive play opportunities for deep learning and flexible thinking for individual and group play.
- Situated along the perimeter and away from the adventure zone for a relaxed play experience.



DEVELOPMENT ZONE

A SAFE SPACE FOR BUDDING WATERPLAYERS TO GROW, LEARN AND DISCOVER.

- Predictable and gentle water effects for safe exploration.
- Inviting shapes and friendly characters and water displays to encourage interaction.
- Opportunities for collaborative and parallel play.

PLAY ZONES

ADVENTURE ZONE



- SCHOONER

EXPLORATION ZONE



- AQUA ARCH
- WATER O
- WHALE TAIL
- GEYSER GROUND SPRAY

DISCOVERY ZONE

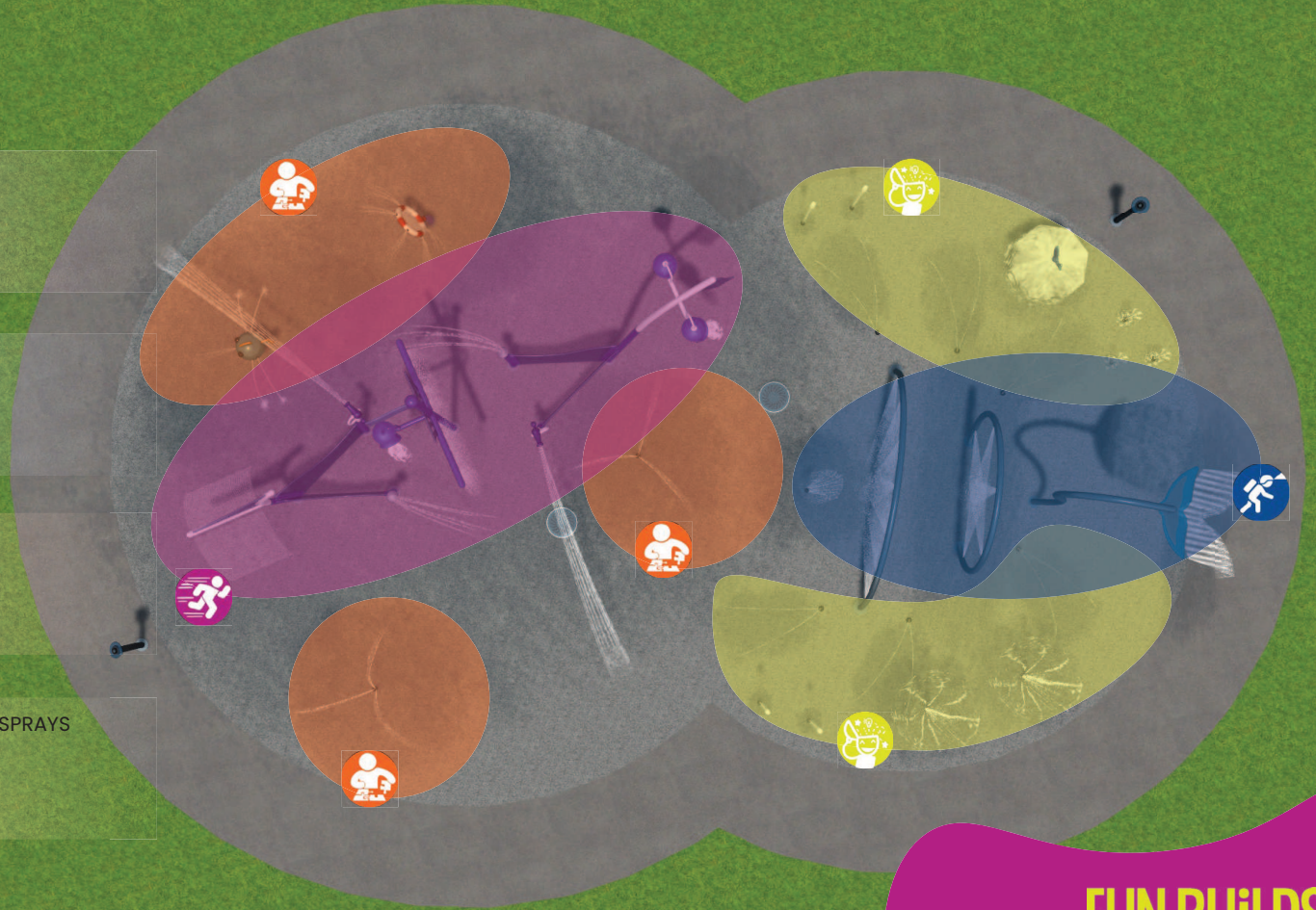


- BLOW FISH
- MAGNIF-EYE
- BUTTER CUP GROUND SPRAYS

DEVELOPMENT ZONE



- FOUNTAIN MOUNTAIN GROUND SPRAYS
- SOLO SPURT GROUND SPRAYS
- FISH
- MONSTER 5 GROUND SPRAYS
- SPLIT SPURT GROUND SPRAYS

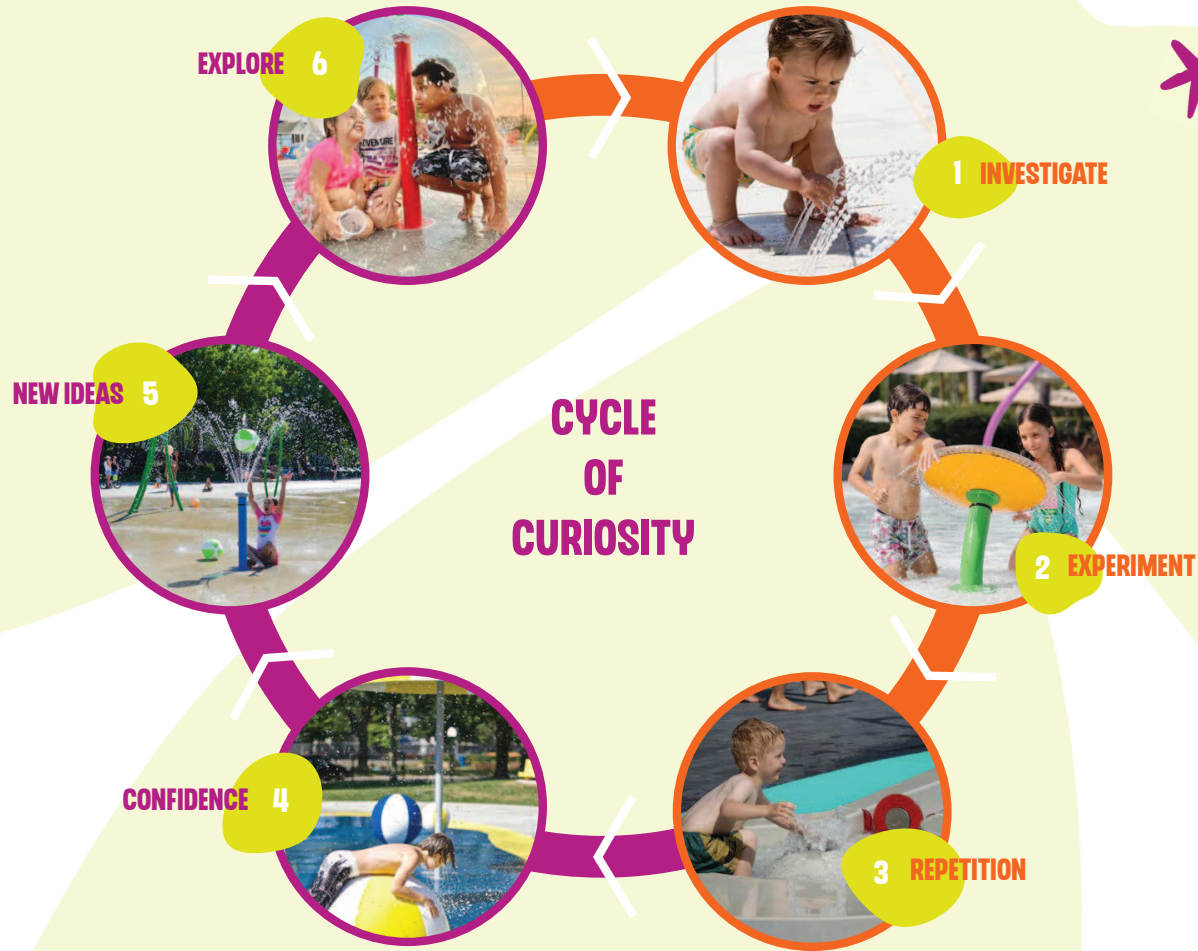


FUN BUILDS

CIVIC PARK,
BURNEY, CA

 **WATERPLAY**

CYCLE OF CURIOSITY



We create products that trigger children's curiosity and offer them an array of unstructured play experiences.



FUN BUILDS

CIVIC PARK,
BURNEY, CA

 **WATERPLAY**

RISK TAKING

WHAT IS PLAY?

It's simple, play is for fun! It's doing something for creation rather than practical purpose. And the best play experiences are ones where we're able to learn, to push ourselves and test our abilities.

WHAT IS RISK TAKING IN PLAY?

Risk taking is integral for developing minds and bodies. It's where we learn what we're capable of. Where we draw our boundaries and limitations. What we should be cautious about. Or what we can enjoy with abandon. These are the skills we learn we take risks. Now go climb to new heights and run under the Mega Soaker!





PROTECTING WHAT WE'RE PASSIONATE ABOUT.

Our work culture is a direct reflection of the passion we have for communities and our hope for a socially just future. The MAKR Group and Waterplay are committed to doing our part and inspiring others to do theirs. We envision a world where wages are fair, socioeconomic barriers are removed, and the environment is healthy and thriving.

ENVIRONMENTAL | SOCIAL | GOVERNANCE

- Strive to operate as a completely paperless business where possible.
- Promote reducing, reusing and recycling best practices throughout our global offices.
- Advocate for carpooling and sustainable methods of transportation in our employees daily commute.
- Waterplay as an ISO | 14001 (environmental management) certified organization that is regularly audited for strict adherence to ISO guidelines and standards



WARRANTY

Waterplay offers an industry-leading warranty that supports your project through it's life cycle.

- 25 years** - Stainless steel
- 10 years** - Aluminum
- 2-3 years** - Fiberglass and plastics
- 2 years** - Stainless Steel Hardware

STANDARDS

As an organization and manufacturer we're committed to making a difference both in-house and through the products we ship worldwide.

- ISO | 9001** certified (quality management)
- ASTM F2461 |** standard practice for manufacturing, construction, operation and maintenance of aquatic play equipment (created in collaboration with Waterplay®)
- ASTM F1487 |** standard for consumer safety performance specification for playground equipment for public use
- ASTM F2376 |** standard practice for classification, design, manufacturing, construction and operation of water slide systems
- CAN/CSA Z614 |** standard for public-use play spaces and play equipment intended for use by children aged 18 months to 12 years

FUN BUILDS
CIVIC PARK,
BURNEY, CA





PURCHASING POWER

Work with Waterplay and Sourcewell for an outstanding experience!

Waterplay® has been awarded a four-year national cooperative purchasing contract with Sourcewell (formerly NJPA).

Protect your specification and fully satisfy bid requirements by choosing to purchase directly through Waterplay as an approved vendor through Sourcewell. By opting to purchase your splash pad features through Sourcewell, you can avoid costly redesigns and high contractor mark-ups.

The contract with Sourcewell allows public purchasing agents throughout the United States and Canada to save time and money by fulfilling their own bidding process when purchasing Waterplay® products through the Sourcewell contract.

Sourcewell participation is free and available to all education and government entities, as well as non-public schools and non-profit organizations.

LET'S BUILD SOMETHING AMAZING TOGETHER.





City of Redding



Graceada Park, Modesto



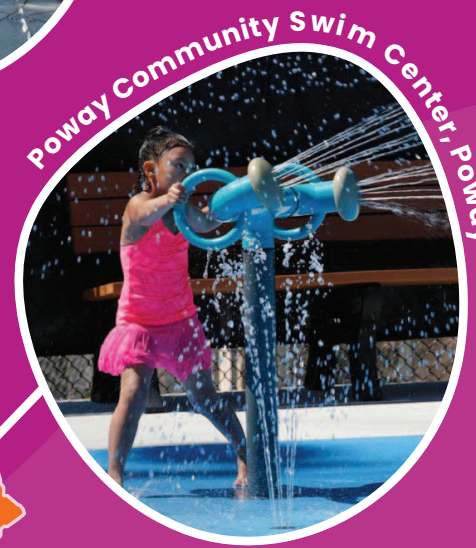
Fresno Grizzlies Baseball Stadium, Fresno



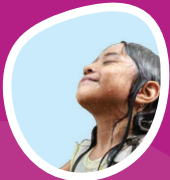
Burnham Smith Park Splash Pad, Corcoran



Ponderosa Park, Anaheim



Poway Community Swim Center, Poway



**CALIFORNIA INSTALLED
PROJECTS**

CIVIC PARK,
BURNEY, CA



THANK YOU FOR THIS OPPORTUNITY

Welcome to

BURNNEY

FUN
BUILDS

waterplay.com



BY MAKE