

# BURNEY WATER DISTRICT CIVIC PARK IMPROVEMENT PROJECT

Preliminary Draft

FUNDING FOR THIS PROJECT HAS BEEN PROVIDED IN FULL BY STATE OF CALIFORNIA  
NATURAL RESOURCES AGENCY DEPARTMENT OF PARKS AND RECREATION PER CAPITA  
GRANT PROGRAM PROJECT NO. SW-45-004

## SYMBOL LEGEND

- CP# CONTROL POINT
- ~> DRAINAGE DIRECTION ARROW
- ⊕ HOSE BIB
- ☆ LIGHT POLE
- ⊕ POLE - JOINT UTILITY
- ⊖ POLE - NO ELEC
- SANITARY SEWER MANHOLE
- ▼ SANITARY SEWER CLEANOUT
- ⊕ DRINKING FOUNTAIN
- ⊕ IRRIGATION METER/BOX
- ⊕ WATER METER/BOX
- ⊕ WATER VALVE
- (N) PARK BENCH
- ~> SLOPE DIRECTION MARKERS

## LINE LEGEND

- ==== (N) VERTICAL CURB
- ==== (N) EP
- ==== (N) CONC
- x- (N) FENCE
- - - - PROPERTY LINE
- ..... FLOWLINE
- W— WATER LINE
- SS— SANITARY SEWER
- E— ELECTRIC LINE

## ABBREVIATIONS

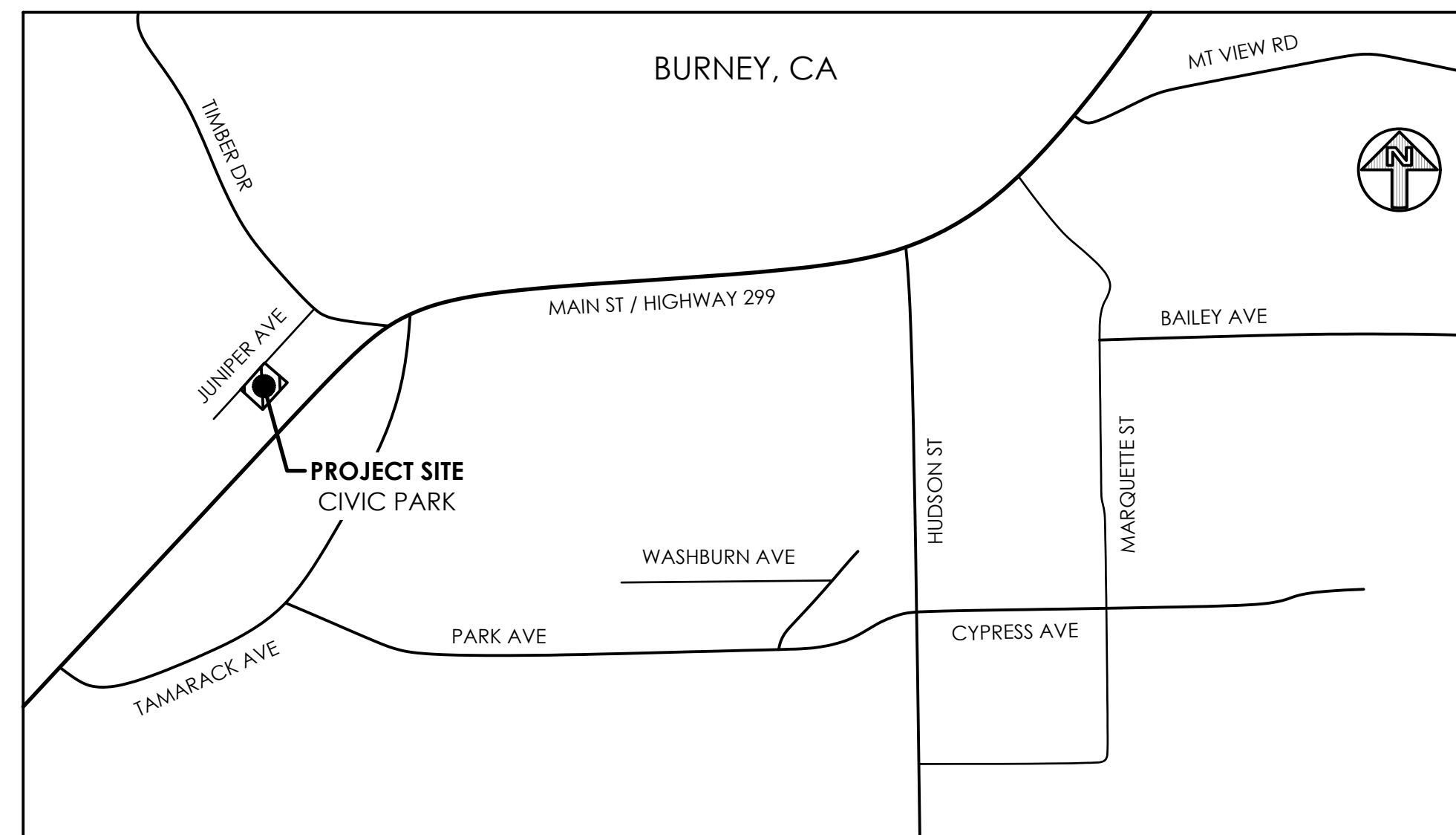
- CONC CONCRETE
- CP CONTROL POINT
- EG EXISTING GRADE
- ELEC ELECTRICAL
- EL/ELEV ELEVATION
- FF FINISH FLOOR
- INV INVERT
- MH MANHOLE
- O/H OVERHEAD
- S SLOPE
- SS SANITARY SEWER
- TYP TYPICAL
- UNO UNLESS NOTED OTHERWISE
- W WATER
- WM WATER METER
- WV WATER VALVE

## HATCH LEGEND

- [Pattern] (N) CONCRETE
- [Pattern] (N) PAVEMENT

## TREE LEGEND

- [Symbol] PINE TREE
- [Symbol] OAK TREE



PROJECT LOCATION MAP  
NTS

## BOARD OF DIRECTORS

- |                  |                |
|------------------|----------------|
| DAVID BARRY      | PRESIDENT      |
| BRITTA ROGERS    | VICE PRESIDENT |
| JIM HAMLIN       | DIRECTOR       |
| FRED RYNESS      | DIRECTOR       |
| RODNEY ARMSTRONG | DIRECTOR       |

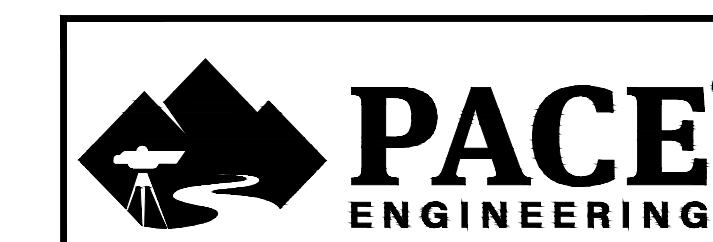
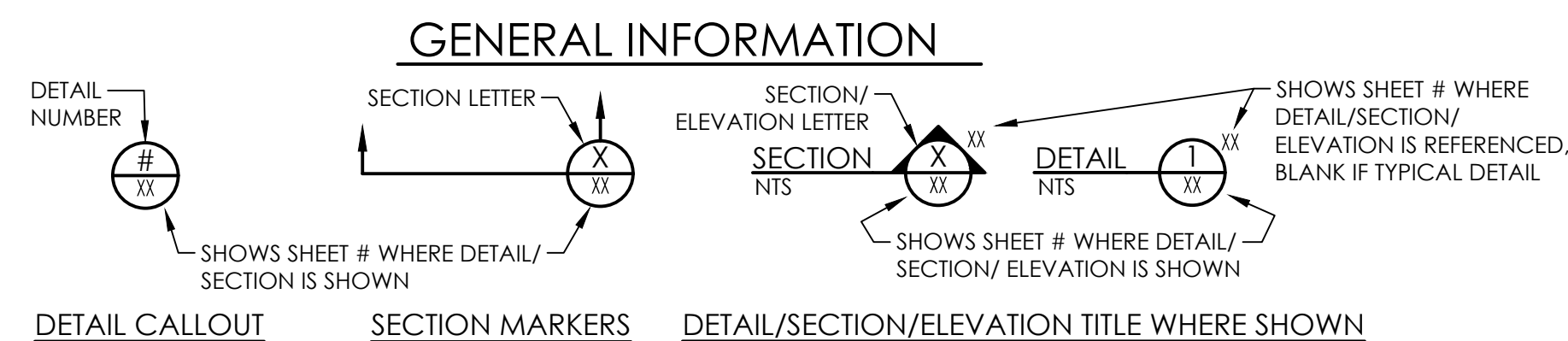
## DISTRICT STAFF

- |                   |                          |
|-------------------|--------------------------|
| DAVID ZEVELY      | DISTRICT MANAGER         |
| MIKE SKELLY       | FIELD SUPERINTENDENT     |
| STEPHANIE McQUADE | ADMINISTRATIVE ASSISTANT |

## PACE DESIGN TEAM

- |             |                  |
|-------------|------------------|
| TROY JONES  | PROJECT MANAGER  |
| RYAN TURNER | PROJECT ENGINEER |

SHEET INDEX		
PAGE	SHEET	TITLE
1	G1.0	TITLE SHEET
2	C1.0	TOPOGRAPHIC MAP
3	C1.1	DEMO PLAN
4	C2.0	SITE PLAN
5	C3.0	GRADING PLAN
6	C3.1	GRADING PLAN
7	C4.0	UTILITY PLAN
8	C5.0	DETAILS
9	C5.1	DETAILS

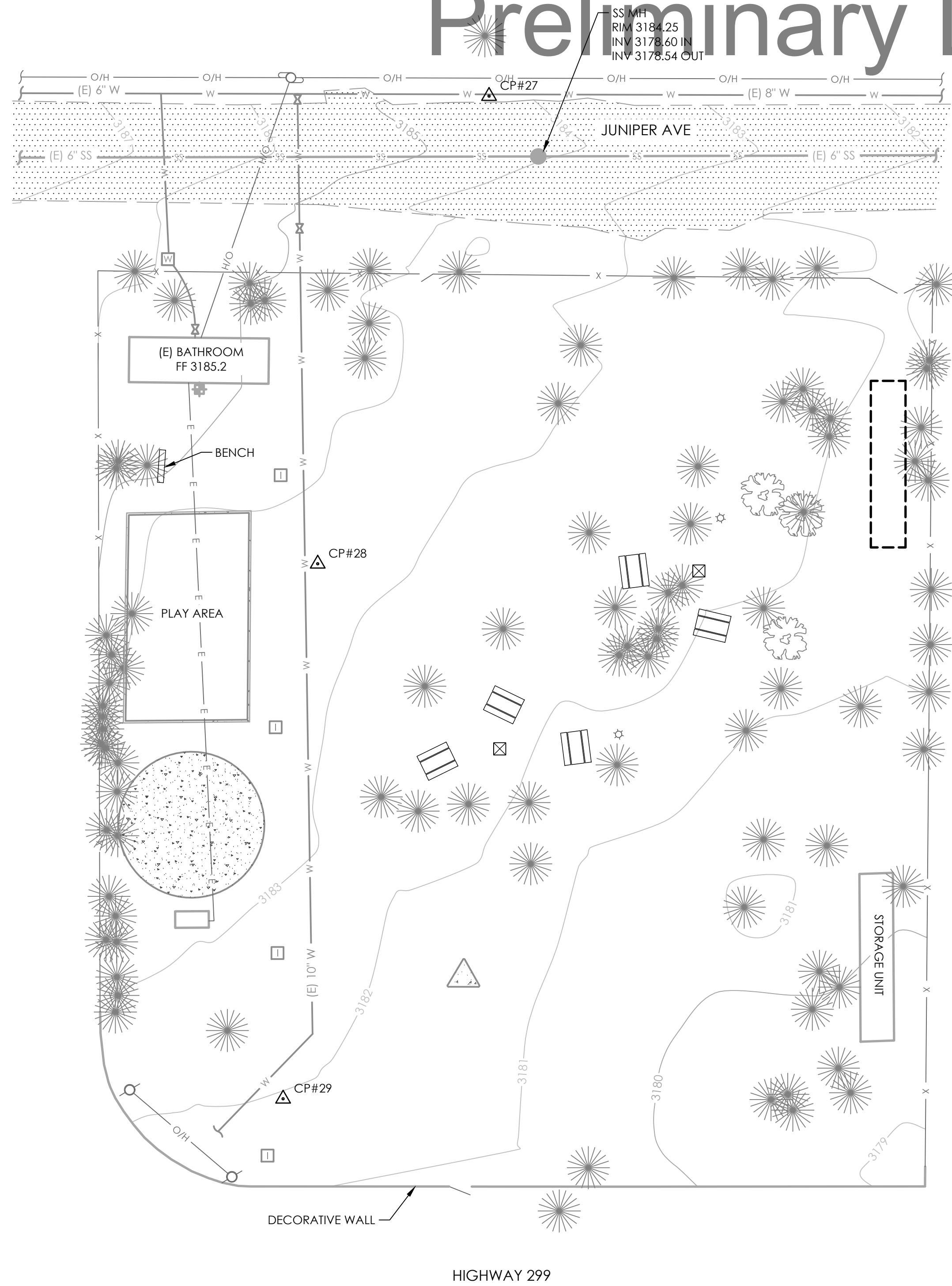


2/29/24

0306.47

SHEET  
**G1.0**  
PG 1 OF 6

# Preliminary Draft



## SYMBOL LEGEND

	CONTROL POINT
	LIGHT POLE
	POLE - JOINT UTILITY
	POLE - NO ELEC
	SANITARY SEWER MANHOLE
	SANITARY SEWER CLEANOUT
	DRINKING FOUNTAIN
	IRRIGATION METER/BOX
	WATER METER/BOX
	WATER VALVE
	CONCRETE TABLE AND BENCH

## ABBREVIATIONS

CONC	CONCRETE
CP	CONTROL POINT
EG	EXISTING GRADE
ELEC	ELECTRICAL
EL/ELEV	ELEVATION
FF	FINISH FLOOR
INV	INVERT
MH	MANHOLE
O/H	OVERHEAD
S	SLOPE
SS	SANITARY SEWER
TYP	TYPICAL
UNO	UNLESS NOTED OTHERWISE
W	WATER
WM	WATER METER
WV	WATER VALVE

## LINE LEGEND

	VERTICAL CURB
	EP
	CONC
	FENCE
	PROPERTY LINE
	FLOWLINE
	WATER LINE
	SANITARY SEWER
	ELECTRIC LINE

## HATCH LEGEND

	(E) CONCRETE
	(E) PAVEMENT

## TREE LEGEND

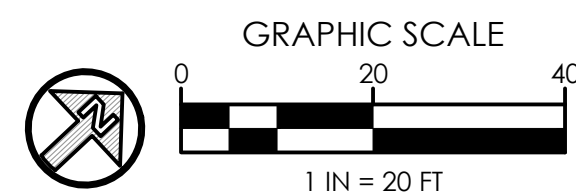
	PINE TREE
	OAK TREE

## GENERAL NOTES

1. THIS SURVEY WAS CONDUCTED ON 10/08/2020.
2. COORDINATE SYSTEM: CALIFORNIA COORDINATE SYSTEM OF 1983 (CCS83), ZONE 1, (EPOCH 2017.5).
3. VERTICAL DATUM: NORTH AMERICAN VERTICAL DATUM OF 1988 (NAVD88), (GEOID 18)
4. CONTOUR INTERVAL: 1 FOOT.
5. UNITS OF MEASUREMENT SHOWN HEREON ARE IN TERMS OF THE U.S. SURVEY FOOT AND DECIMALS THEREOF.
6. TREE CLASSIFICATION IS BASED UPON SURVEYOR'S BEST ESTIMATION; A CERTIFIED ARBORIST SHOULD BE CONSULTED TO VERIFY WHERE PERTINENT; TREES LESS THAN 6" IN DIAMETER WERE NOT SURVEYED.
7. UTILITIES/FEATURES SHOWN HEREON ARE BASED UPON ABOVE-GROUND, OBSERVED EVIDENCE ONLY.

## CONTROL POINT TABLE

CP #	NORTHING	EASTING	ELEV	DESCRIPTION
27	2204336.53	6651651.83	3184.37	8" MAG NAIL
28	2204231.85	6651705.09	3183.44	8" MAG NAIL
29	2204140.01	6651791.93	3181.97	8" MAG NAIL



DRAFT

BAR IS ONE INCH ON ORIGINAL DRAWING  
0" 1"  
IF NOT ONE INCH ON THIS SHEET, ADJUST SCALES ACCORDINGLY.

REVISIONS		
NO	DATE	DESCRIPTION

**PACE ENGINEERING**

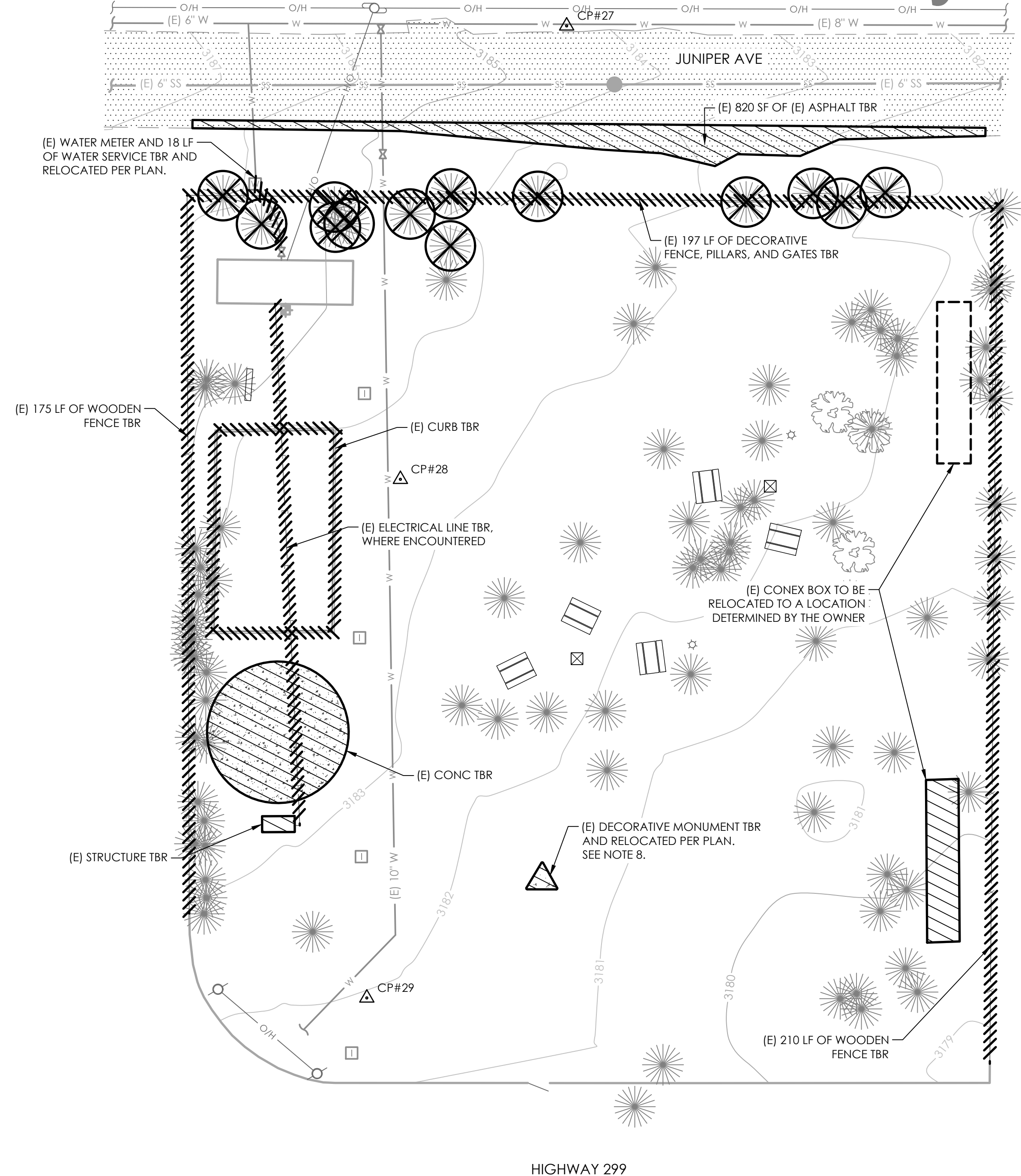
DES -	CKD - TJ	JOB NO.
DRN - RT	DATE - 2/29/24	0306.47

SIGNED  
PRELIMINARY  
NOT FOR  
CONSTRUCTION

BURNEY WATER DISTRICT  
CIVIC PARK IMPROVEMENT PROJECT  
TOPOGRAPHIC MAP

SHEET  
**C1.0**  
PG 2 OF 9

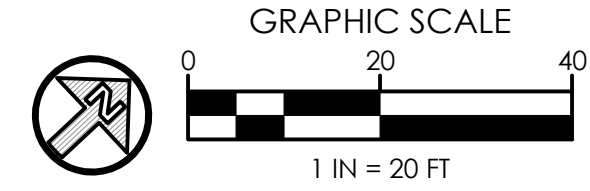
# Preliminary Draft



**DEMOLITION LEGEND**

TBA	TO BE ABANDONED
TBR	TO BE REMOVED
	TREES TO BE REMOVED
	DEMOLITION LINE
	DEMOLITION AREA (BLDG, CONC, SIDEWALK)

- DEMOLITION NOTES:**
1. CALL USA (811 OR 1-800-227-2600) 48 HOURS PRIOR TO ANY DEMOLITION ACTIVITIES TO LOCATE UTILITIES.
  2. CONTRACTOR SHALL COORDINATE AND ARRANGE FOR THE DISCONNECTION OF ALL UTILITIES BEING MODIFIED OR DEMOLISHED WITH THE OWNER AND UTILITY COMPANIES. THE CONTRACTOR SHALL PROPERLY CAP ALL UNUSED OR ABANDONED UTILITIES.
  3. CONTRACTOR TO PROTECT TREES THAT ARE TO REMAIN. INSTALL SNOW FENCE AROUND THE TREE 10-FT± FROM TRUNK FOR TREES WITHIN THE PROJECT SITE THAT ARE TO REMAIN.
  4. ALL DEMOLISHED MATERIALS NOT CALLED OUT IN THE DRAWINGS TO BE RETURNED TO THE OWNER ARE TO BE PROPERLY DISPOSED OF OFF-SITE.
  5. THE CONTRACTOR SHALL MAINTAIN EXISTING SITE DRAINAGE PATTERN TO FUNCTION THROUGHOUT THE CONSTRUCTION PERIOD WITH APPROPRIATE EROSION AND SEDIMENT CONTROL DEVICES IN PLACE AS SHOWN ON SHEET \_\_\_\_.
  6. IT IS THE CONTRACTORS RESPONSIBILITY TO REMOVE AND LEGALLY DISPOSE OF ANY EXCESS FILL MATERIAL AND WASTE GENERATED DURING GRADING AND CONSTRUCTION OPERATIONS.
  7. THE CONTRACTOR SHALL ASSUME RESPONSIBILITY FOR THE PROTECTION OF ALL PROPERTY CORNER MONUMENTS, AND SHALL HAVE, AT HIS EXPENSE, ALL CORNER MONUMENTS REPLACED WHICH ARE DISTURBED BY CONSTRUCTION ACTIVITIES.
  8. DECORATIVE MONUMENT TO BE RELOCATED BY A PROFESSIONAL WITH A MINIMUM OF 5-YEARS DOCUMENTED EXPERIENCE MOVING CONCRETE SCULPTURES. CONTRACTOR SHALL SUBMIT A SEQUENCE OF WORK TO THE ENGINEER PRIOR TO THE RELOCATION ESTABLISHING A MITIGATION PLAN TO ANY DAMAGE TO THE MONUMENT.



DRAFT

BAR IS ONE INCH ON ORIGINAL DRAWING  
 0" ————— 1"  
 IF NOT ONE INCH ON THIS SHEET, ADJUST SCALES ACCORDINGLY.

REVISIONS		
NO	DATE	DESCRIPTION

**PACE ENGINEERING**

DES: TJ/RT	CKD: TJ	JOB NO.
DRN: RT	DATE: 2/29/24	0306.47

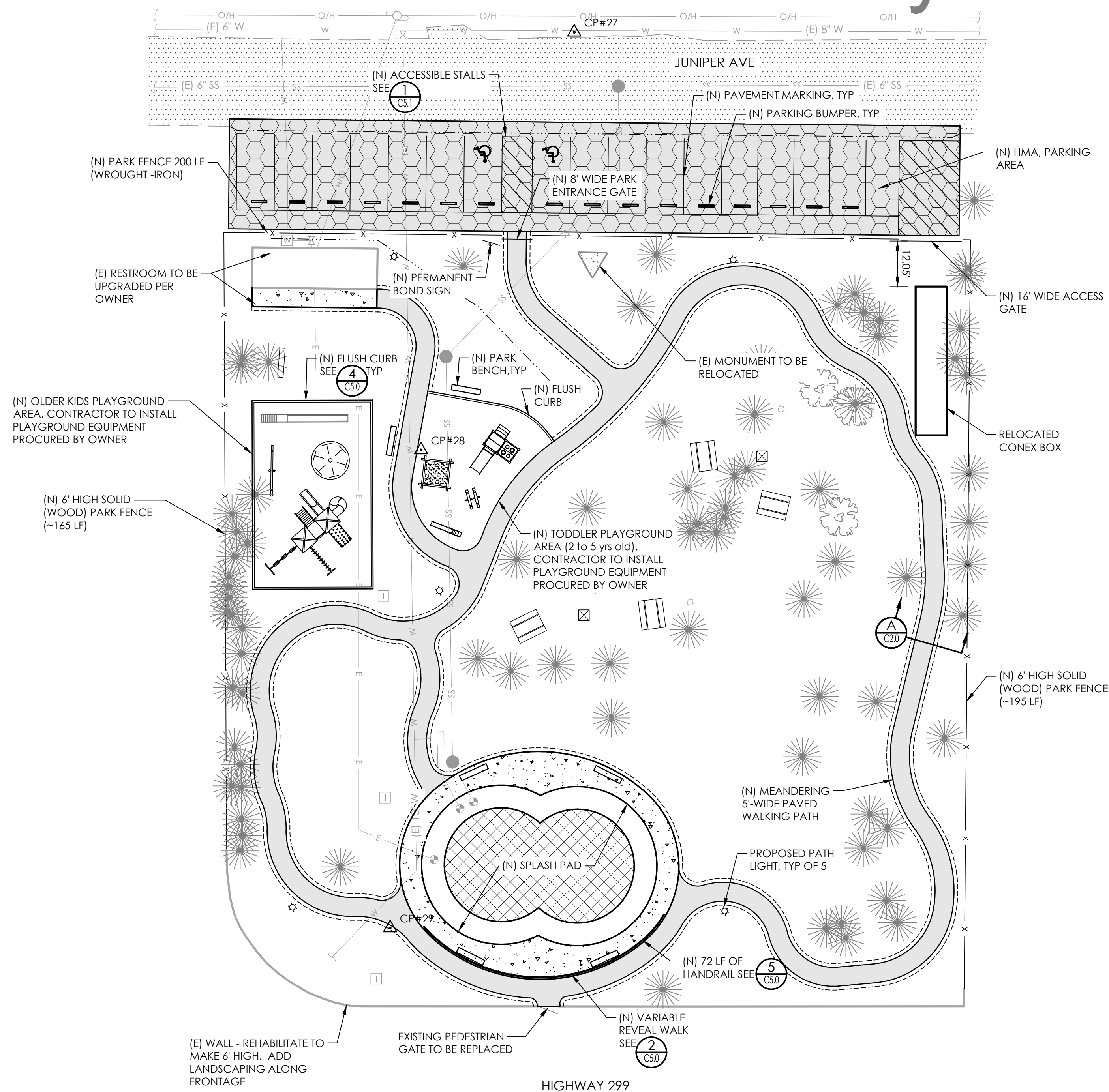
SIGNED  
 PRELIMINARY  
 NOT FOR  
 CONSTRUCTION

BURNEY WATER DISTRICT  
 CIVIC PARK IMPROVEMENT PROJECT  
 DEMO PLAN

SHEET  
**C1.1**  
 PG 3 OF 9

Plot Date: March 01, 2024 - 5:02 pm Login Name: rtuner  
 File Name: M:\land projects\030647\_coke park improvements\01 CAD\01 Survey\topographic Survey\_Design\dwg Layout.dwg

# Preliminary Draft



**SYMBOL LEGEND**

CP#	CONTROL POINT
→	DRAINAGE DIRECTION ARROW
⊕	HOSE BIB
*	(N) LIGHT POLE
○	POLE - JOINT UTILITY
○	POLE - NO ELEC
●	SANITARY SEWER MANHOLE
▼	SANITARY SEWER CLEANOUT
+	DRINKING FOUNTAIN
□	IRRIGATION METER/BOX
⊞	WATER METER/BOX
⊞	WATER VALVE
▭	(N) PARK BENCH

**ABBREVIATIONS**

CONC	CONCRETE
CP	CONTROL POINT
(E)	EXISTING
ELEC	ELECTRICAL
EL/ELEV	ELEVATION
FF	FINISH FLOOR
INV	INVERT
MH	MANHOLE
(N)	NEW
O/H	OVERHEAD
S	SLOPE
SS	SANITARY SEWER
TYP	TYPICAL
UNO	UNLESS NOTED OTHERWISE
W	WATER
WM	WATER METER
WV	WATER VALVE

**LINE LEGEND**

—	(N) VERTICAL CURB
—	(N) EP
—	(N) CONC
-x-	(N) FENCE
- - -	PROPERTY LINE
—	FLOWLINE
W	WATER LINE
SS	SANITARY SEWER
E	ELECTRIC LINE

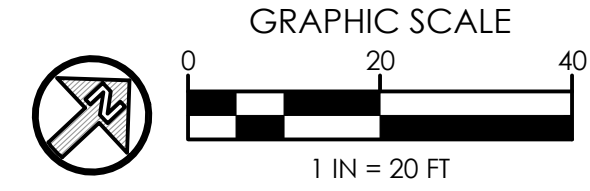
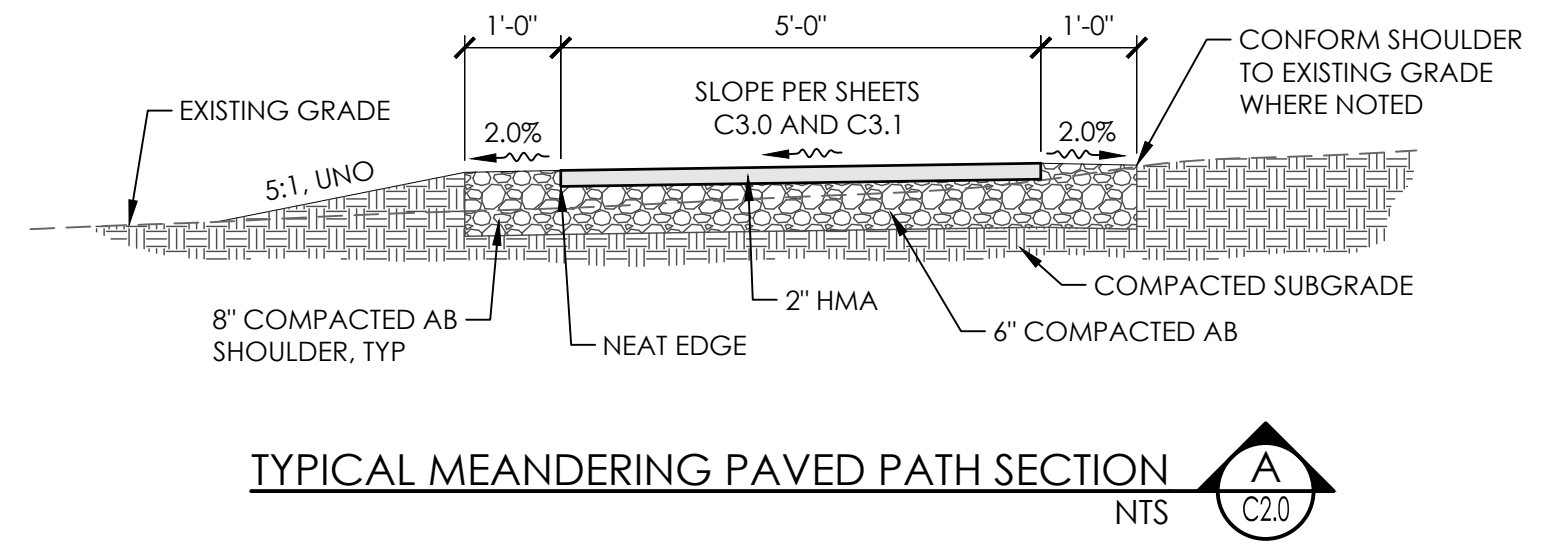
**HATCH LEGEND**

[Pattern]	(N) CONCRETE
[Pattern]	(E) PAVEMENT
[Pattern]	(N) 2" HMA O/ 6" AB
[Pattern]	(N) 3" HMA O/ 12" AB

**TREE LEGEND**

[Symbol]	PINE TREE
[Symbol]	OAK TREE

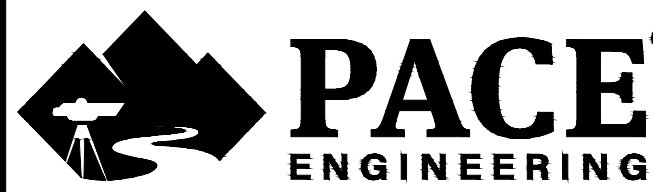
- NOTES**
- THE CONSTRUCTION AND INSTALLATION OF IMPROVEMENTS SHALL CONFORM TO THESE PLANS, THE BURNEY WATER DISTRICT CONSTRUCTION STANDARDS, AND THE STATE OF CALIFORNIA - DEPARTMENT OF TRANSPORTATION 2022 STANDARD PLANS AND SPECIFICATIONS.
  - THE CONTRACTOR SHALL OBTAIN AN ENCROACHMENT PERMIT PRIOR TO ANY WORK IN THE STREET RIGHT-OF-WAY.
  - CALL USA (811) TO LOCATE ALL UTILITIES 48 HOURS PRIOR TO ANY CONSTRUCTION.
  - REMOVE TREES IN CUT/FILL AREAS EXCEPT THOSE SHOWN TO REMAIN. AVOID DRIVING UNDER TREES WHERE POSSIBLE.
  - ANY CHANGES IN THESE PLANS ARE TO RECEIVE PRIOR APPROVAL OF THE OWNER AND PACE ENGINEERING, INC.
  - ALL BRUSH PILES CREATED CLEARING SHALL BE ABATED PRIOR TO THE NEXT FIRE SEASON.
  - PARKING BUMPERS SHALL BE 4-FOOT LONG PRE-CAST CONCRETE AS PER COOK CONCRETE PRODUCTS, ITEM PB 4 OR EQUAL. EACH BUMPER SHALL BE ANCHORED WITH TWO PIECES OF 1/2-INCH REBAR, 24" LONG.



DRAFT

BAR IS ONE INCH ON ORIGINAL DRAWING  
0" 1"  
IF NOT ONE INCH ON THIS SHEET, ADJUST SCALES ACCORDINGLY.

REVISIONS		
NO	DATE	DESCRIPTION



DES: RT/TJ	CKD: TJ	JOB NO.
DRN: RT	DATE: 2/29/24	0306.47

SIGNED  
PRELIMINARY  
NOT FOR  
CONSTRUCTION

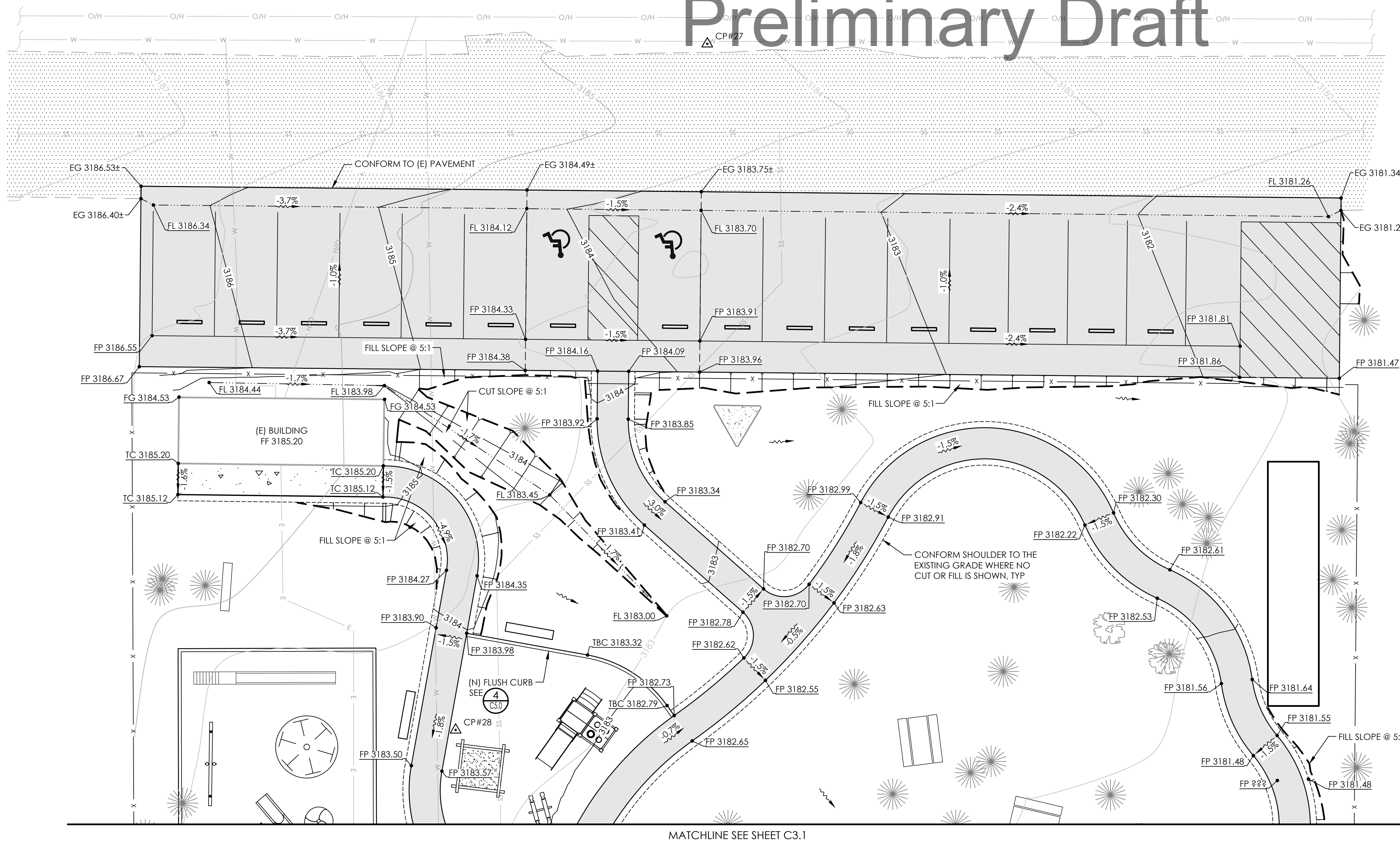
BURNEY WATER DISTRICT  
CIVIC PARK IMPROVEMENT PROJECT

SITE PLAN

SHEET  
**C2.0**  
PG 4 OF 9

Plot Date: March 01, 2024 - 5:03 pm  
File Name: M:\land projects\030647\_civc park improvements\01 CAD\05 CD\Site Planning\Layout\_Site

# Preliminary Draft



**SYMBOL LEGEND**

	CONTROL POINT
	DRAINAGE DIRECTION ARROW
	HOSE BIB
	LIGHT POLE
	POLE - JOINT UTILITY
	POLE - NO ELEC
	SANITARY SEWER MANHOLE
	SANITARY SEWER CLEANOUT
	DRINKING FOUNTAIN
	IRRIGATION METER/BOX
	WATER METER/BOX
	WATER VALVE
	(N) PARK BENCH
	SLOPE DIRECTION MARKERS

**ABBREVIATIONS**

CONC	CONCRETE
CP	CONTROL POINT
EG	EXISTING GRADE
ELEC	ELECTRICAL
EL/ELEV	ELEVATION
FF	FINISH FLOOR
INV	INVERT
MH	MANHOLE
O/H	OVERHEAD
S	SLOPE
SS	SANITARY SEWER
TYP	TYPICAL
UNO	UNLESS NOTED OTHERWISE
W	WATER
WM	WATER METER
WV	WATER VALVE

**LINE LEGEND**

	(N) VERTICAL CURB
	(N) EP
	(N) CONC
	(N) FENCE
	PROPERTY LINE
	FLOWLINE
	WATER LINE
	SS SANITARY SEWER
	E ELECTRIC LINE

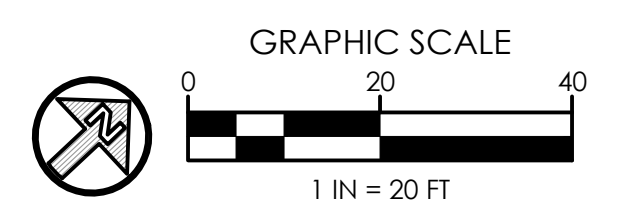
**HATCH LEGEND**

	(N) CONCRETE
	(N) PAVEMENT

**TREE LEGEND**

	PINE TREE
	OAK TREE

- NOTES**
- SEE SITE PLAN FOR DIMENSIONS NOT SHOWN.
  - ALL GRADES SHOWN ARE FINISH GRADES. ALLOW FOR VARIOUS THICKNESS OF BASE, PAVING AND CONCRETE IN PREPARING SUBGRADE.
  - GRADE SITE TO THE GRADES SHOWN. COMPACT FILL AREAS AND TOP 6" OF CUT AREAS TO 95% OF MAXIMUM DENSITY AS MEASURED BY ASTM D-1557. IMPORT OR EXPORT AS NECESSARY.
  - ALL AREAS TO RECEIVE FILL ARE TO BE SCARIFIED A MINIMUM DEPTH OF 8", MOISTURE CONDITIONED, AND COMPACTED TO 95% OF MAXIMUM DENSITY AS MEASURED BY ASTM D-1557.
  - ALL SITE CONCRETE SHALL BE CLASS 520-C-2500, UNLESS OTHERWISE SHOWN. APPLY LIGHT BROOM FINISH TO ALL WALKWAYS. CONSTRUCT CONTROL JOINTS (WEAKENED PLANE JOINTS) IN CURBS, GUTTERS, AND WALKS AT 5 FEET OC MAX. CONSTRUCT 1/2" EXPANSION JOINT, WITH EXPANSION JOINT FILLER, AT ALL CURB/GUTTER/WALK RETURNS AND AT 20 FEET OC MAX IN CURBS/WALKS.
  - HOT MIX ASPHALT (HMA) SHALL CONFORM TO THE REQUIREMENTS OF THE STATE OF CALIFORNIA DEPARTMENT OF TRANSPORTATION (CALTRANS) STANDARD SPECIFICATIONS FOR BE TYPE A. 1/2-INCH MAXIMUM SIZE AGGREGATE. ASPHALT BINDER SHALL BE PG 64-28.
  - AGGREGATE BASE SHALL BE 3/4" CLASS 2 AGGREGATE BASE PER STATE SPECIFICATIONS, SECTION 26. COMPACT TO 95% OF MAXIMUM DENSITY AS MEASURED BY ASTM D-1557.
  - ALL ACCESSIBLE PATHS OF TRAVEL SHALL NOT EXCEED 5% IN THE DIRECTION OF TRAVEL OR 2% PERPENDICULAR TO DIRECTION OF TRAVEL. RAMPS GREATER THAN 6" HEIGHT WITH SLOPES BETWEEN 5% AND 8.3% SHALL REQUIRE RAILING ALONG PATH, PER ADA STANDARDS.
  - CONTRACTOR TO RESEED ALL DISTURBED AREAS PER THE OWNER.



**DRAFT**

BAR IS ONE INCH ON ORIGINAL DRAWING  
 0" 1"  
 IF NOT ONE INCH ON THIS SHEET, ADJUST SCALES ACCORDINGLY.

REVISIONS		DESCRIPTION
NO	DATE	

**PACE ENGINEERING**

DES: TJ/RT    CKD: TJ    JOB NO.     
 DRN: RT    DATE: 2/29/24    0306.47

SIGNED  
 PRELIMINARY  
 NOT FOR  
 CONSTRUCTION

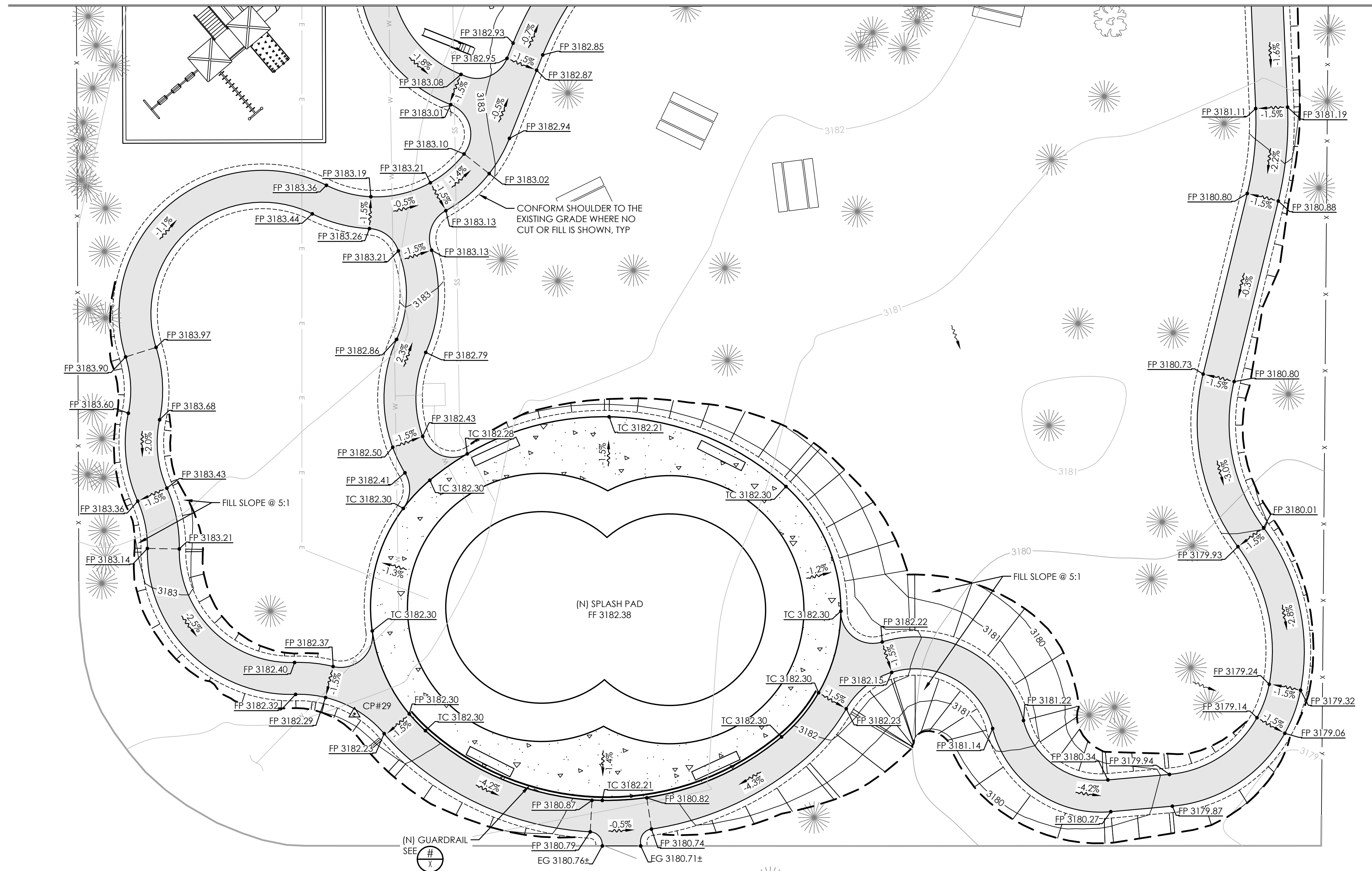
BURNEY WATER DISTRICT  
 CIVIC PARK IMPROVEMENT PROJECT  
 GRADING PLAN

SHEET  
**C3.0**  
 PG 5 OF 9

Plot Date: March 01, 2024 - 5:03 pm    Login Name: Turner  
 File Name: M:\land projects\0306.47 oak park improvements\01 CAD\05 CD\Grading Plan\Avg Layout.dwg    Grading-1

# Preliminary Draft

MATCHLINE SEE SHEET C3.0



## SYMBOL LEGEND

- ▲ CP# CONTROL POINT
- DRAINAGE DIRECTION ARROW
- ⊕ HOSE BIB
- ⊙ LIGHT POLE
- ⊖ POLE - JOINT UTILITY
- ⊖ POLE - NO ELEC
- SANITARY SEWER MANHOLE
- ▼ SANITARY SEWER CLEANOUT
- ⊕ DRINKING FOUNTAIN
- ⊕ IRRIGATION METER/BOX
- ⊕ WATER METER/BOX
- ⊕ WATER VALVE
- ⊕ (N) PARK BENCH
- SLOPE DIRECTION MARKERS

## LINE LEGEND

- (N) VERTICAL CURB
- (N) EP
- (N) CONC
- x- (N) FENCE
- - - PROPERTY LINE
- - - FLOWLINE
- - - W WATER LINE
- - - SS SANITARY SEWER
- - - E ELECTRIC LINE

## ABBREVIATIONS

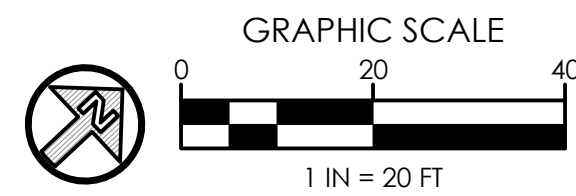
- CONC CONCRETE
- CP CONTROL POINT
- EG EXISTING GRADE
- ELEC ELECTRICAL
- EL/ELEV ELEVATION
- FF FINISH FLOOR
- INV INVERT
- MH MANHOLE
- O/H OVERHEAD
- S SLOPE
- SS SANITARY SEWER
- TYP TYPICAL
- UNO UNLESS NOTED OTHERWISE
- W WATER
- WM WATER METER
- WV WATER VALVE

## HATCH LEGEND

- [Pattern] (N) CONCRETE
- [Pattern] (N) PAVEMENT

## TREE LEGEND

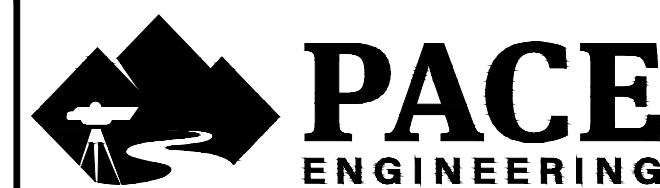
- [Symbol] PINE TREE
- [Symbol] OAK TREE



DRAFT

BAR IS ONE INCH ON ORIGINAL DRAWING  
0' — 1"  
IF NOT ONE INCH ON THIS SHEET, ADJUST SCALES ACCORDINGLY.

REVISIONS		
NO	DATE	DESCRIPTION



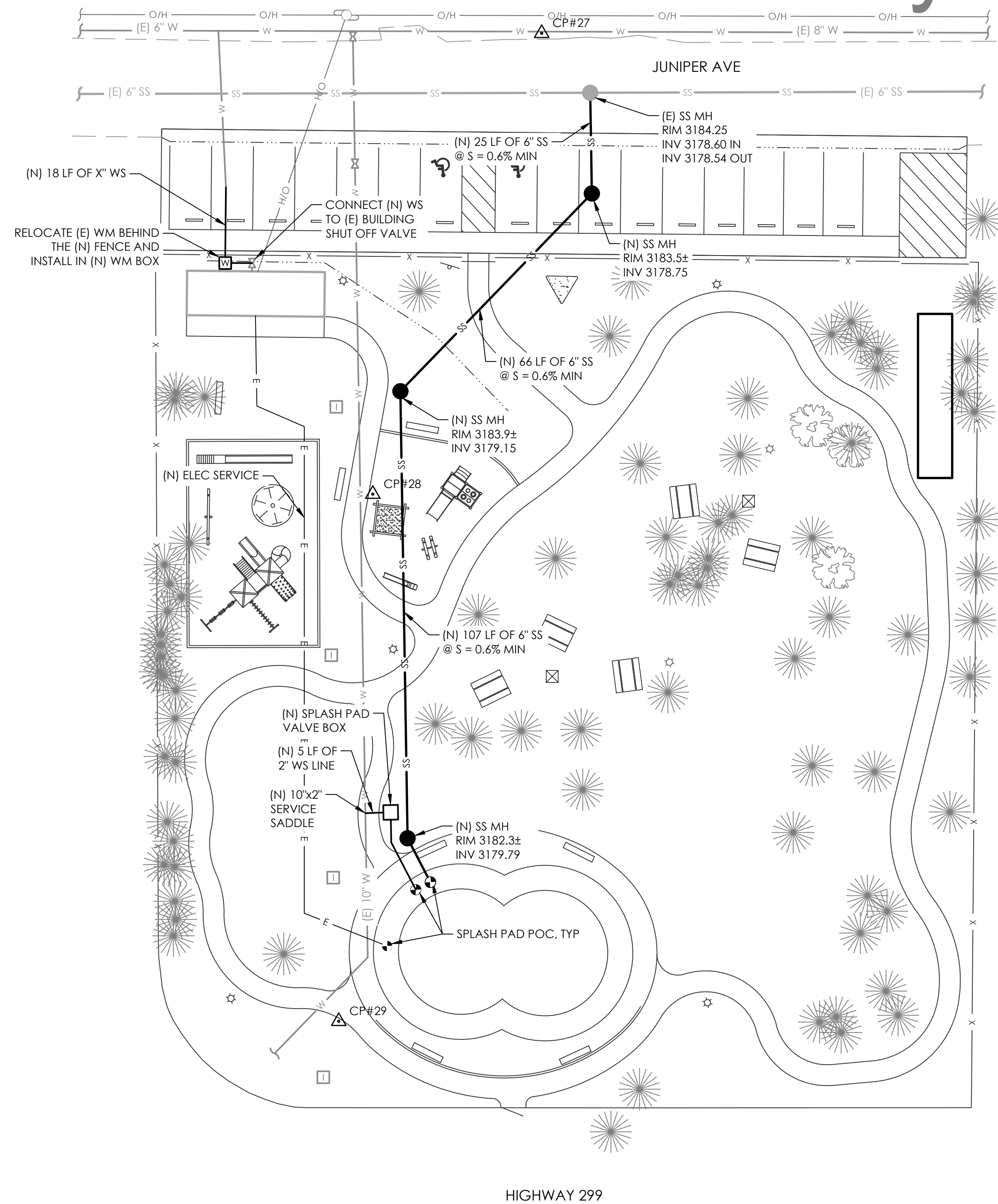
DES: TJ/RT CKD: TJ JOB NO. 0306.47  
DRN: RT DATE: 2/29/24

SIGNED  
PRELIMINARY  
NOT FOR  
CONSTRUCTION

BURNEY WATER DISTRICT  
CIVIC PARK IMPROVEMENT PROJECT  
GRADING PLAN

SHEET  
**C3.1**  
PG 6 OF 9

# Preliminary Draft



## SYMBOL LEGEND

	CONTROL POINT
	DRAINAGE DIRECTION ARROW
	HOSE BIB
	(N) LIGHT POLE
	POLE - JOINT UTILITY
	POLE - NO ELEC
	SANITARY SEWER MANHOLE
	SANITARY SEWER CLEANOUT
	DRINKING FOUNTAIN
	IRRIGATION METER/BOX
	WATER METER/BOX
	WATER VALVE
	(N) PARK BENCH

## ABBREVIATIONS

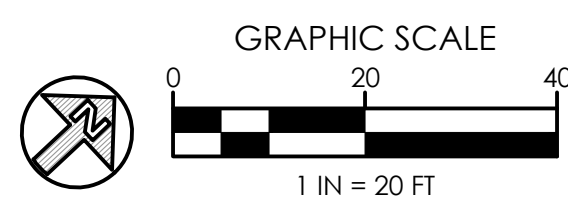
CONC	CONCRETE
CP	CONTROL POINT
(E)	EXISTING
ELEC	ELECTRICAL
EL/ELEV	ELEVATION
FF	FINISH FLOOR
INV	INVERT
MH	MANHOLE
(N)	NEW
O/H	OVERHEAD
S	SLOPE
SS	SANITARY SEWER
TYP	TYPICAL
UNO	UNLESS NOTED OTHERWISE
W	WATER
WM	WATER METER
WS	WATER SERVICE
WV	WATER VALVE

## LINE LEGEND

	PROPERTY LINE
	(E) WATER LINE
	(N) WATER LINE
	(E) SANITARY SEWER
	(N) SANITARY SEWER
	(N) ELECTRIC LINE

## NOTES

1. CALL USA (811) TO LOCATE ALL UTILITIES 48 HOURS PRIOR TO ANY CONSTRUCTION.
2. SEE SITE PLAN FOR DIMENSIONS NOT SHOWN.
3. USE CLASS X TRENCH BACKFILL FOR ALL UNDERGROUND UTILITIES EXCEPT WHERE SHOWN OTHERWISE.
4. THRUST BLOCKS SHALL BE INSTALLED AT ALL ELBOWS, TEES, BENDS AND DEAD ENDS ALONG THE WATER LINE. SEE DETAILS X SHEET XX.
5. POTHOLE AND VERIFY LOCATIONS OF ALL PIPE AND UTILITY CROSSINGS PRIOR TO CONSTRUCTION.



DRAFT

BAR IS ONE INCH ON ORIGINAL DRAWING  
0" 1"  
IF NOT ONE INCH ON THIS SHEET, ADJUST SCALES ACCORDINGLY.

REVISIONS		
NO	DATE	DESCRIPTION



DES	TJ/RT	CKD	TJ	JOB NO.
DRN	RT	DATE	2/29/24	0306.47

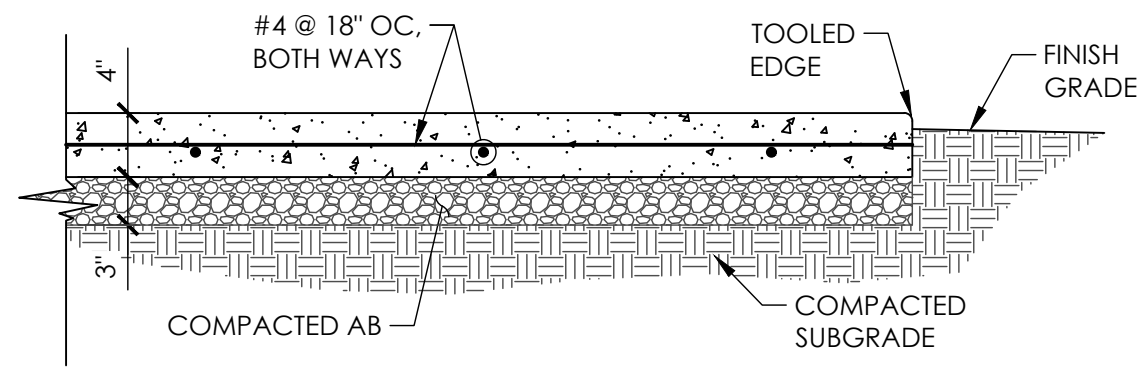
SIGNED  
PRELIMINARY  
NOT FOR  
CONSTRUCTION

BURNEY WATER DISTRICT  
CIVIC PARK IMPROVEMENT PROJECT

UTILITY PLAN

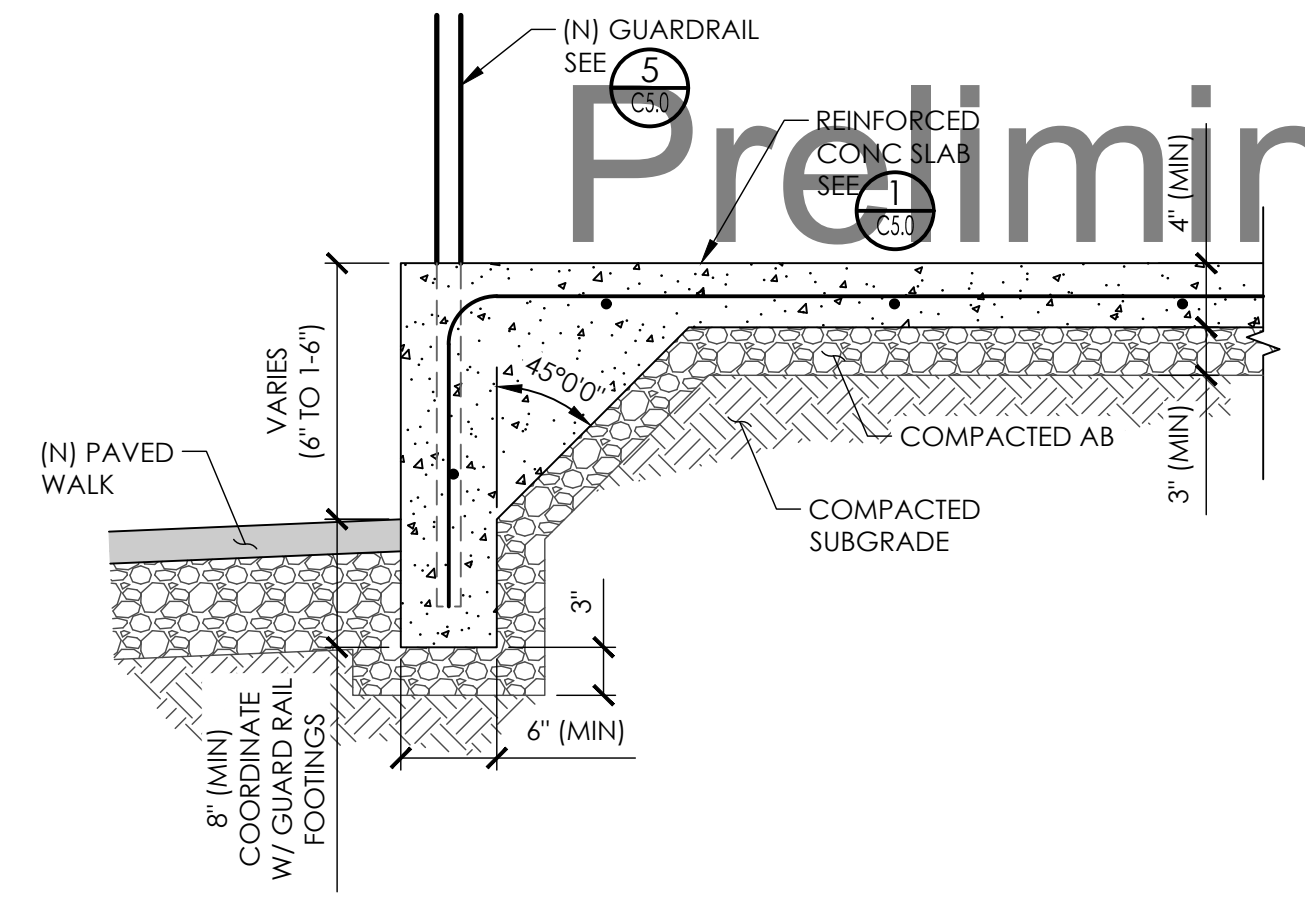
SHEET  
**C4.0**  
PG 7 OF 9

# Preliminary Draft

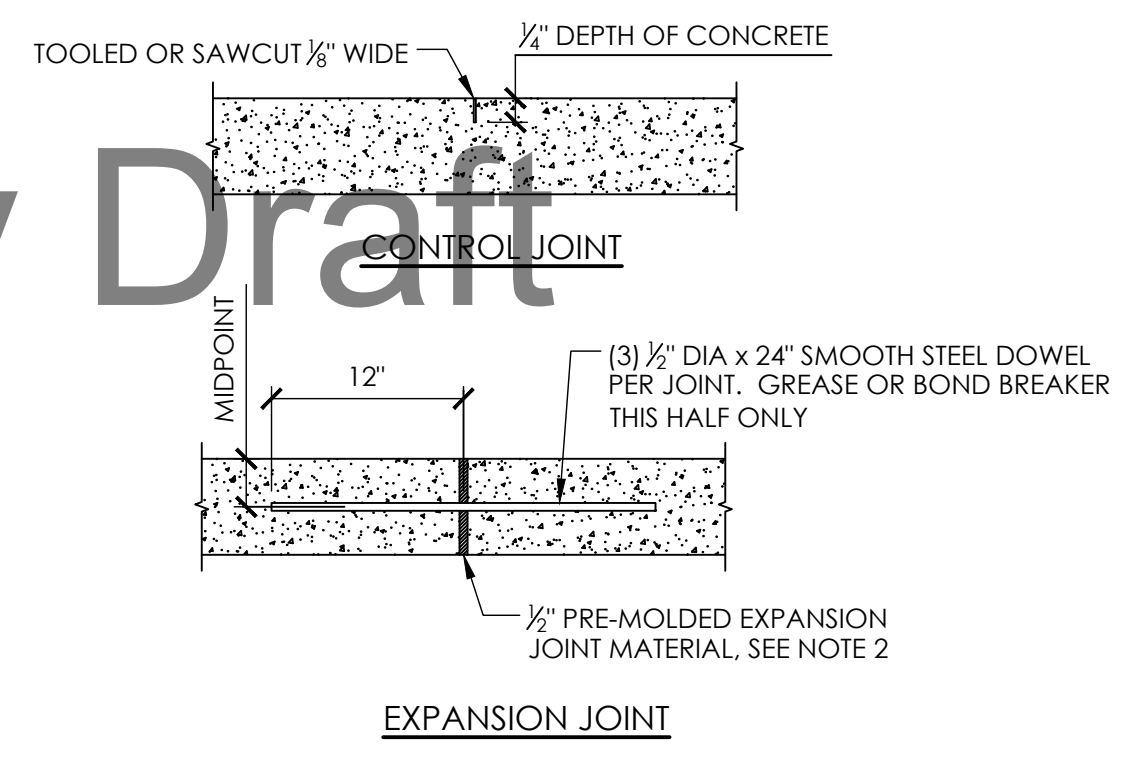


NOTES:  
1. ALL WORK AND MATERIALS SHALL CONFORM TO THE "STANDARD SPECIFICATIONS FOR PUBLIC WORKS CONSTRUCTION" (GREENBOOK)

DETAIL 1  
NTS C5.0

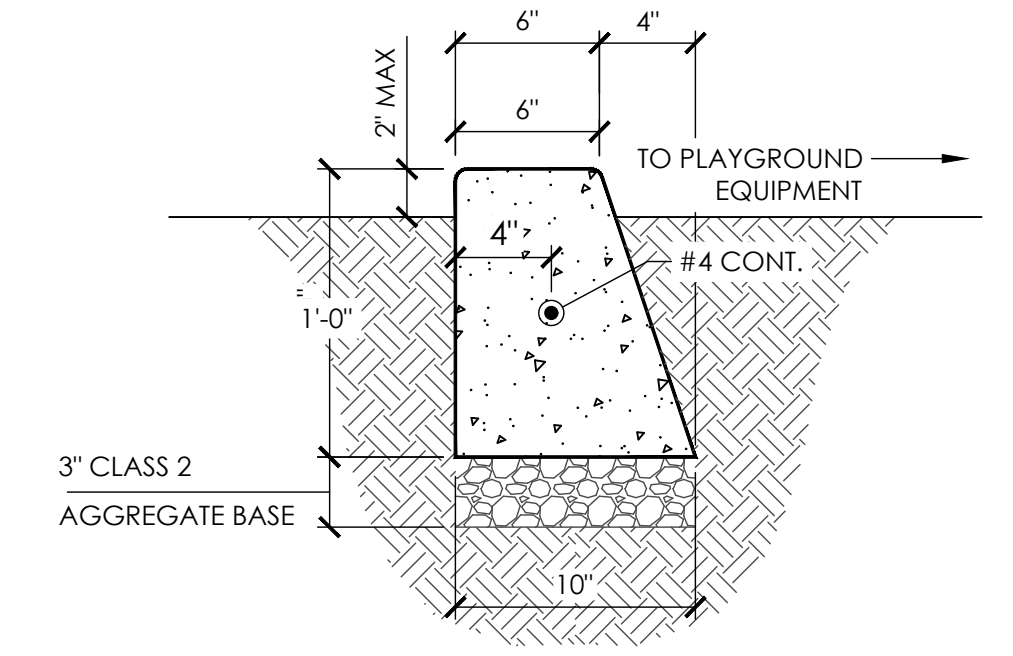


DETAIL 2  
NTS C5.0



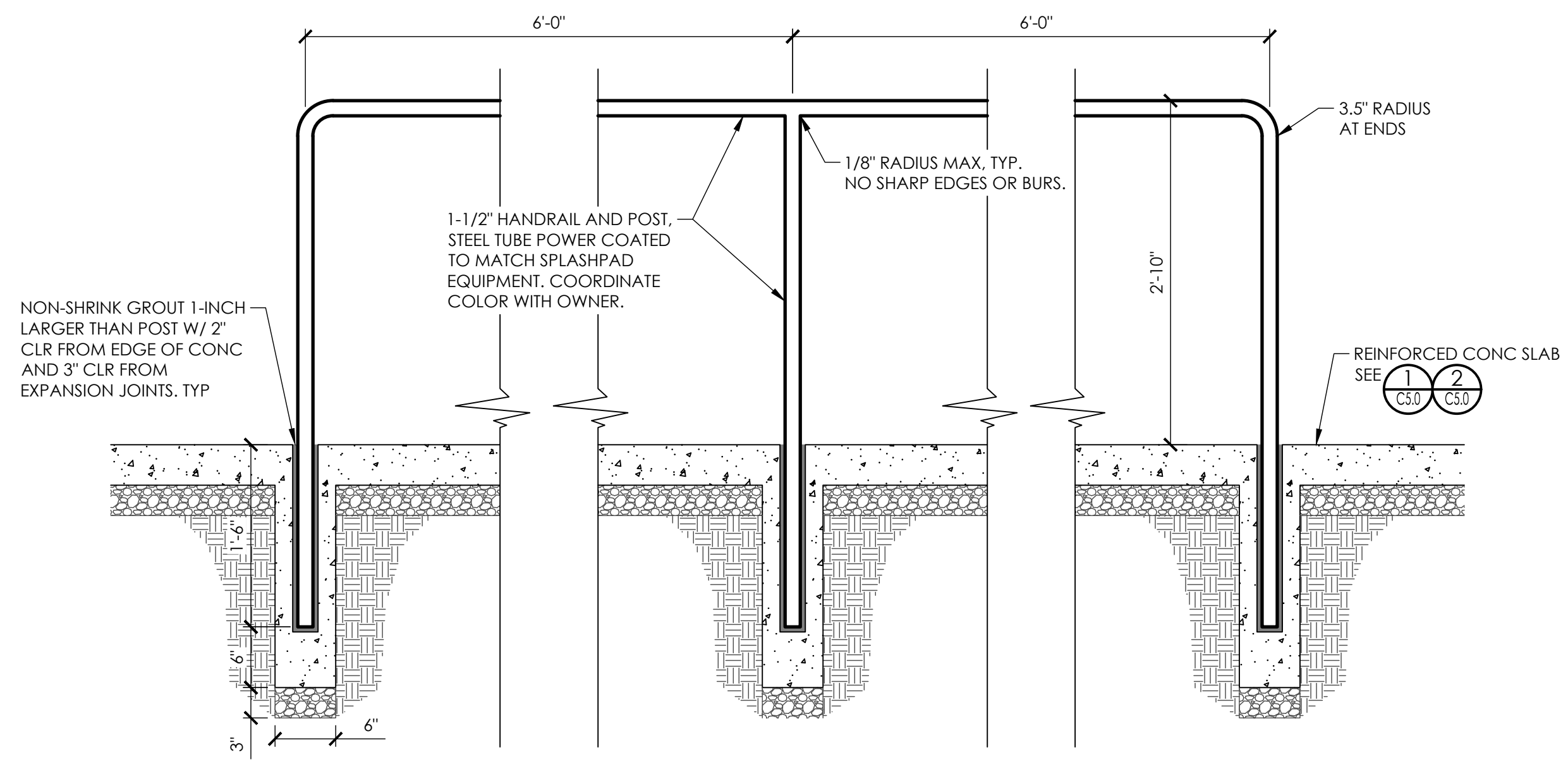
NOTES:  
1. 1/2 INCH PRE-MOLDED JOINT MATERIAL SHALL BE HELD FIRMLY IN PLACE PRIOR TO PLACING CONCRETE.  
2. EXPANSION JOINTS SHALL BE INSTALLED AT THE BEGINNING AND END OF ALL CURB/WALK RETURNS.  
3. FOR WALKWAYS, EXPANSION JOINTS SHALL BE INSTALLED AT INTERVALS NOT TO EXCEED 50' MAX OC.  
3. CONTROL JOINTS SHALL BE AT 5' OC MAX IN SIDEWALKS, 12' OC MAX IN CURBS AND GUTTERS.

DETAIL 3  
NTS C5.0



NOTES:  
1. PROVIDE A CONTROL JOINT AT 12 FT. O.C.  
2. ALL EXPOSED SURFACES SHALL RECEIVE A LIGHT BROOM FINISH PARALLEL TO THE CURB.

DETAIL 4  
NTS C5.0



NOTES:  
1. DETAIL SHOWS DESIGN INTENTS ONLY. CONTRACTOR TO SUBMIT SHOP DRAWINGS TO THE ENGINEER FOR REVIEW PRIOR TO CONSTRUCTION.  
2. INSTALL HANDRAIL PLUMB AND LEVEL. CONFORM TO THE CURVE OF THE NEW SPLASHPAD AS SHOWN ON SHEET C2.0.

DETAIL 5  
NTS C5.0

DRAFT

BAR IS ONE INCH ON ORIGINAL DRAWING  
0" 1"  
IF NOT ONE INCH ON THIS SHEET, ADJUST SCALES ACCORDINGLY.

REVISIONS		
NO	DATE	DESCRIPTION

DES: TJ/RT CKD: TJ JOB NO. 0306.47  
DRN: RT DATE: 2/29/24

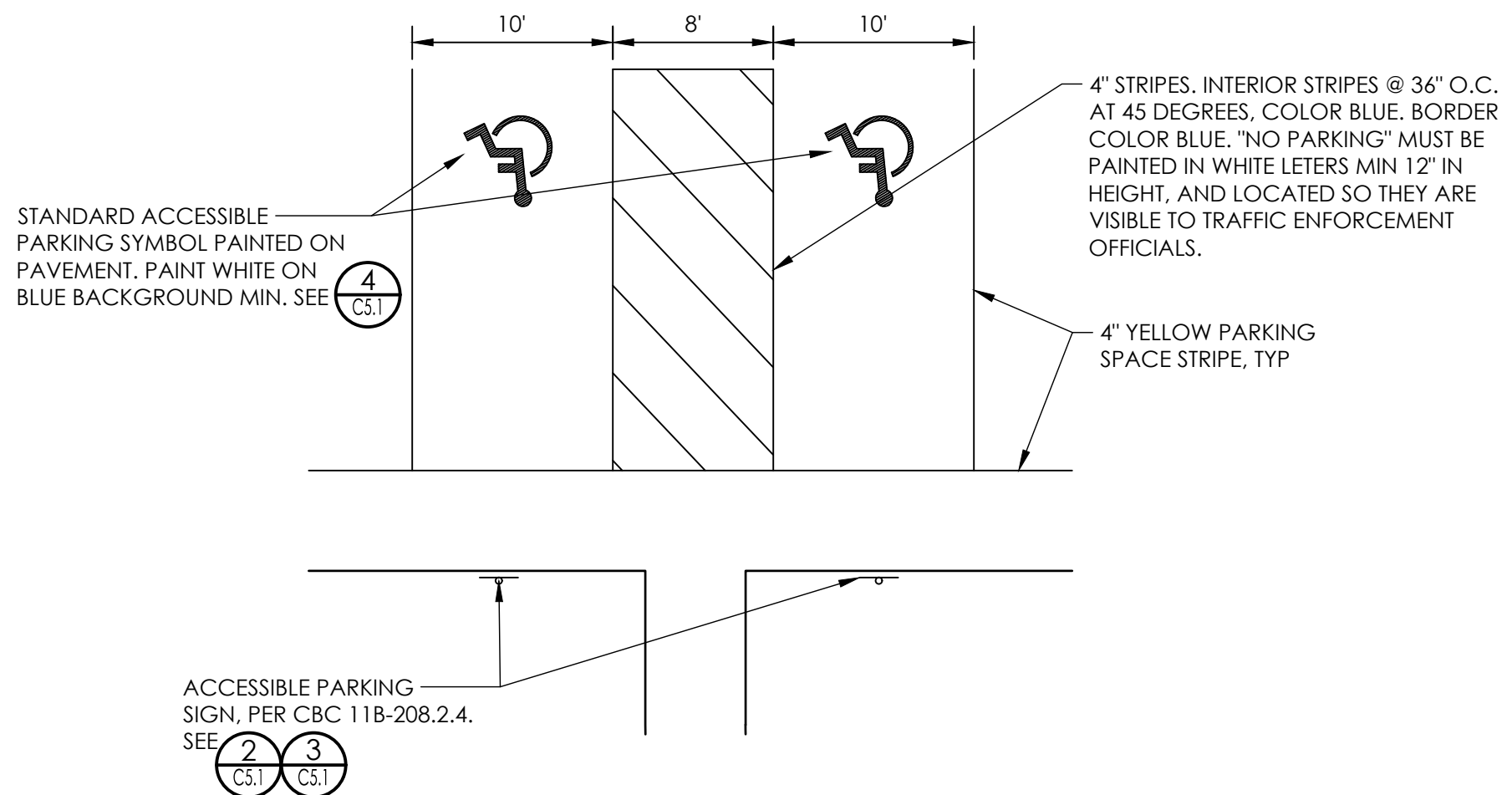
SIGNED

BURNEY WATER DISTRICT  
CIVIC PARK IMPROVEMENT PROJECT  
DETAILS

SHEET  
**C5.0**  
PG 8 OF 9

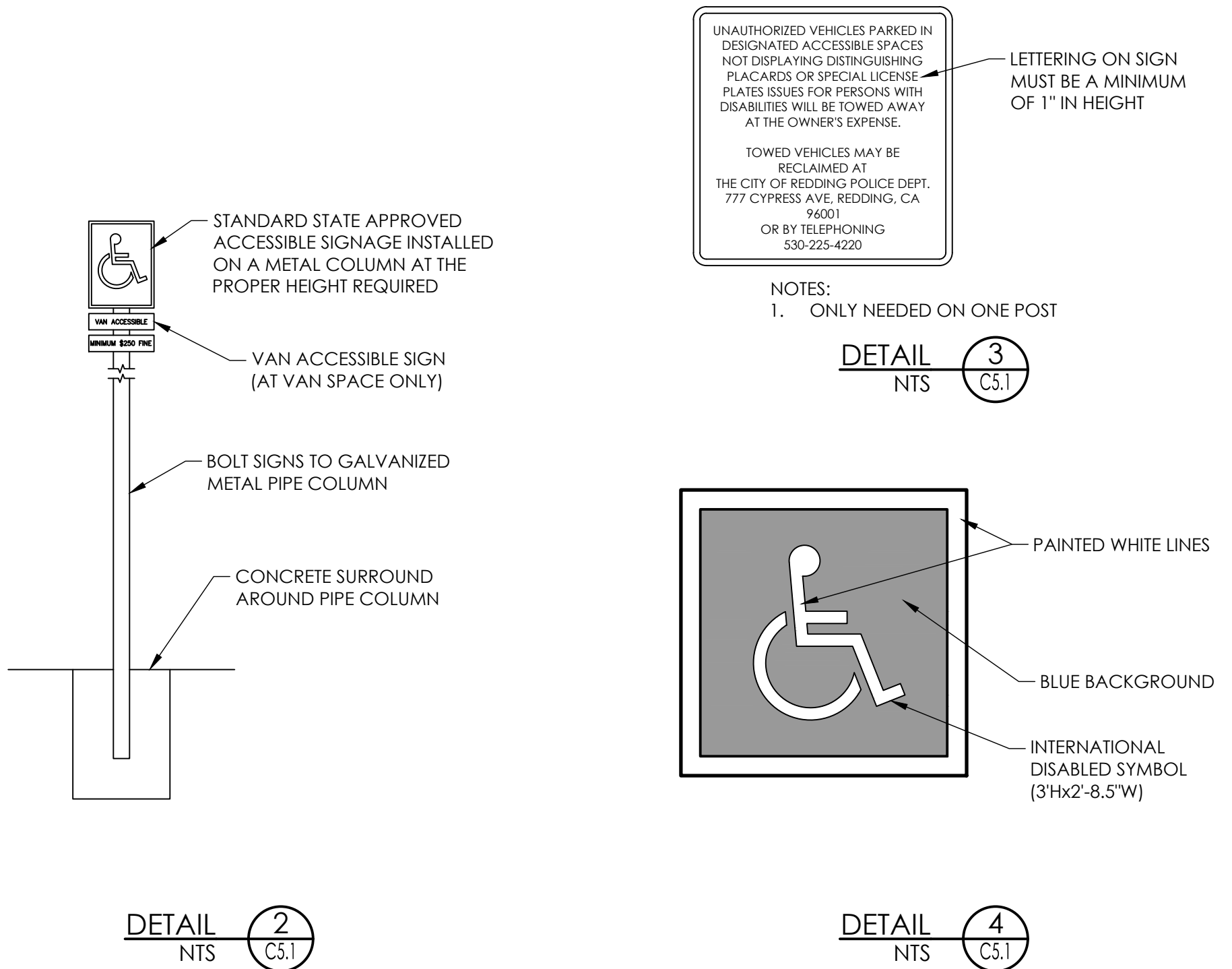


# Preliminary Draft



- NOTES:
- 2% MAXIMUM SLOPE AT ACCESSIBLE PARKING SPACES AND ACCESS AISLES IN ANY DIRECTION.
  - ALL ACCESS AISLES SHALL MEET ALL CODES AND ADAAG REGULATIONS.

DETAIL 1  
NTS C5.1



DRAFT

BAR IS ONE INCH ON ORIGINAL DRAWING  
0" — 1"  
IF NOT ONE INCH ON THIS SHEET, ADJUST SCALES ACCORDINGLY.

REVISIONS		
NO	DATE	DESCRIPTION

DES: TJ/RT CKD: TJ JOB NO.  
DRN: RT DATE: 2/29/24 0306.47

SIGNED

BURNEY WATER DISTRICT  
CIVIC PARK IMPROVEMENT PROJECT  
DETAILS

SHEET  
**C5.1**  
PG 2 OF 9

Plot Date: March 01, 2024 - 5:03 pm. Login Name: Turner  
File Name: M:\land projects\030647.cwk park improvements\01 CAD\05 CD\Detail.dwg Layout: Detail-2

# Civic Park

Burney, CA

Prepared for: Burney Water District

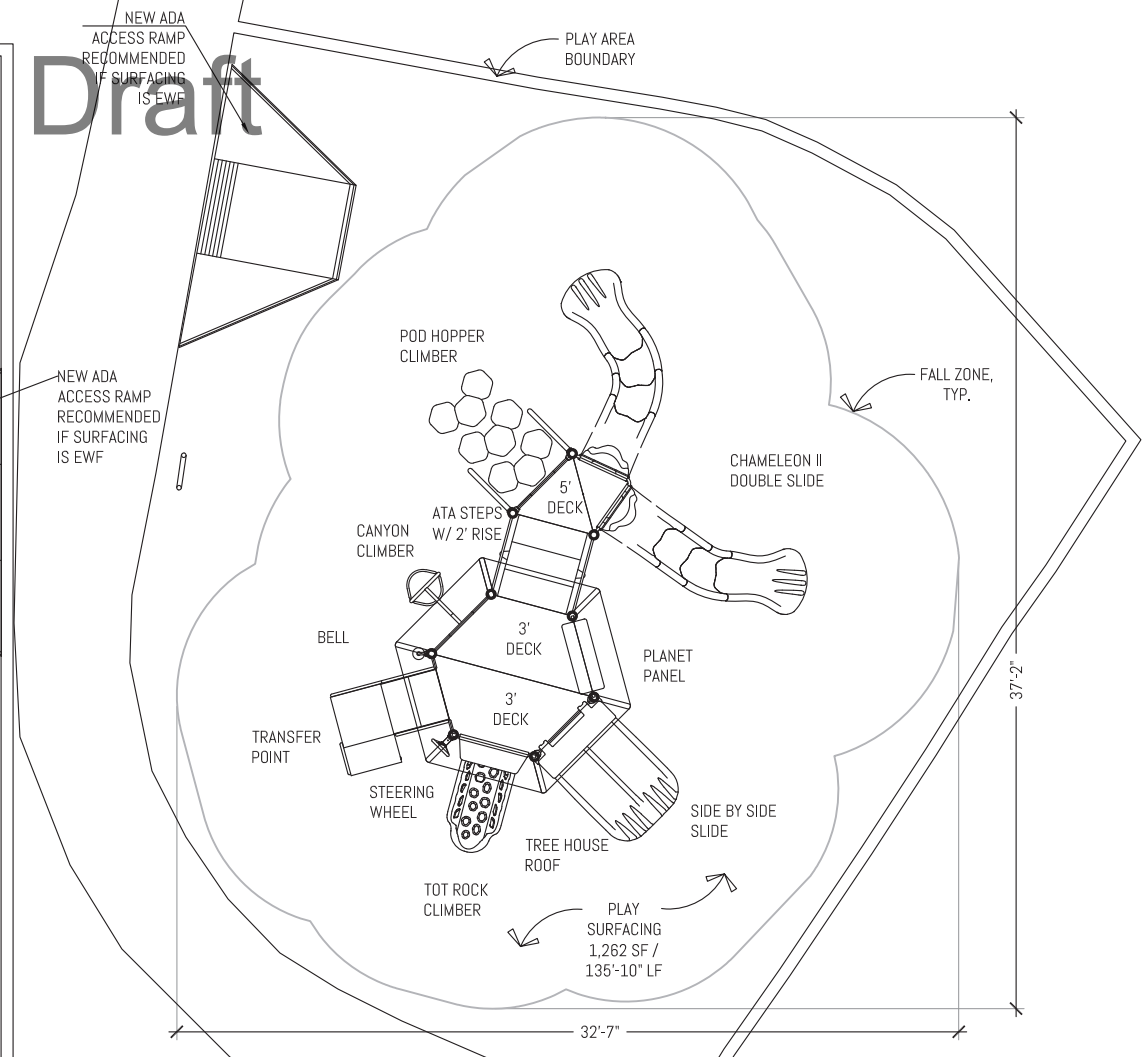
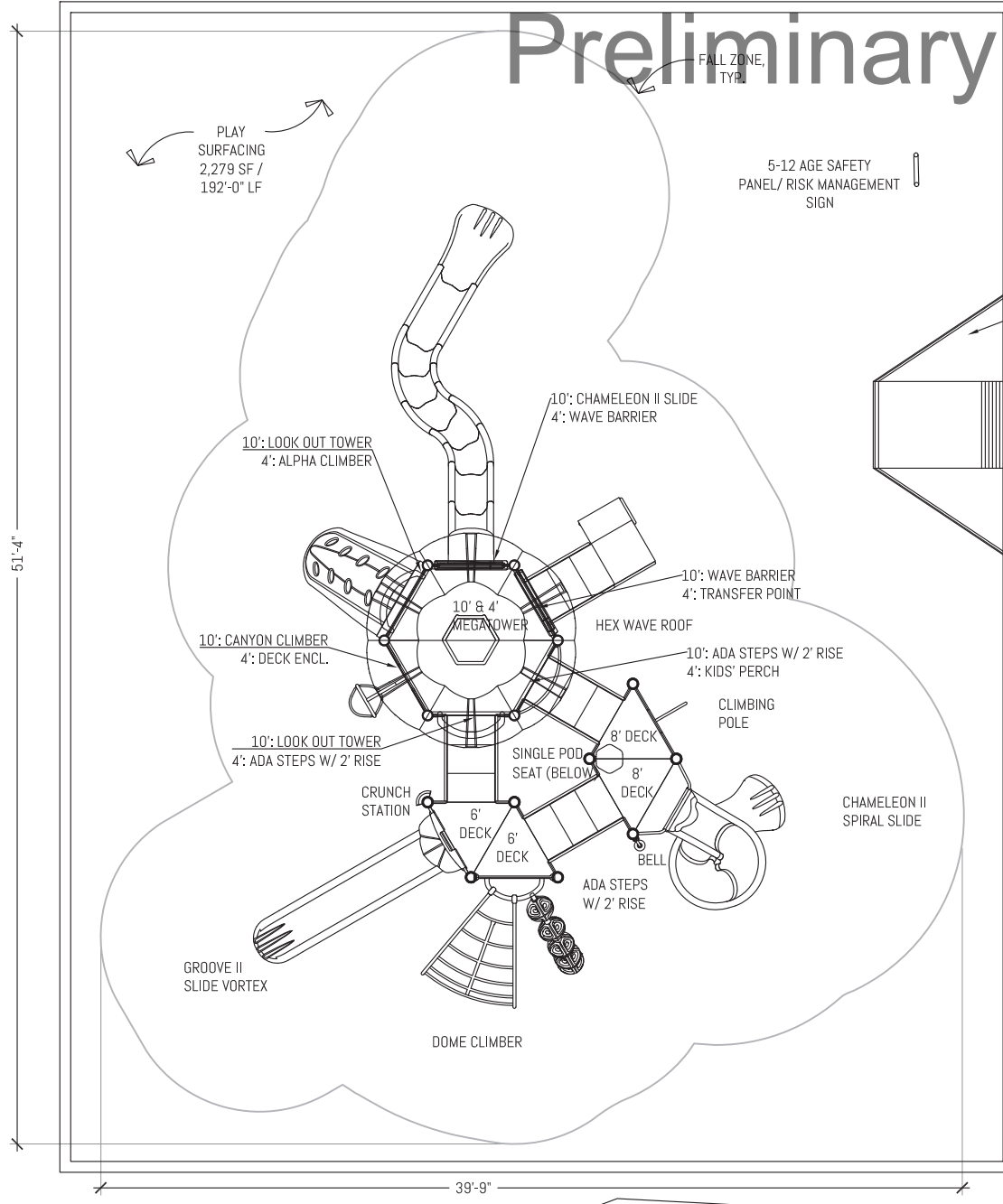
## Preliminary Draft



SALES FLYER ITEM# 714S695J

PLAY AREA - AGE APPROPRIATE 5-12 YEARS:		CAPACITY: 77 - 89 CHILDREN	
ELEVATED PLAY ACTIVITIES (TOTAL)	8	REQ'D: 4	
ELEVATED PLAY ACTIVITIES ACCESSIBLE BY TRANSFER:	8	REQ'D: 0	
ELEVATED PLAY ACTIVITIES ACCESSIBLE BY RAMP:	0	REQ'D: 0	
GROUND LEVEL ACTIVITY TYPE:	3	REQ'D: 3	
GROUND LEVEL ACTIVITY QUANTITY:	3	REQ'D: 3	
NOTES:			
1. USE ZONES FINISH SURFACE OF PLAYGROUND COMPLIES WITH ASTM F1292-99.			
2. GROUND SURFACING COMPLIES WITH ASTM 1951-99			
3. PLAYGROUND EQUIPMENT SHALL COMPLY WITH ASTM F1487-98.			
4. THIS PLAY AREA MEETS CBC SECTION 11B-1008.			
CRITICAL FALL HEIGHT : 10'-0"			

# Preliminary Draft



SALES FLYER ITEM# 718S180J

PLAY AREA - AGE APPROPRIATE 2-12 YEARS:		CAPACITY: 43-50 CHILDREN	
ELEVATED PLAY ACTIVITIES (TOTAL)	7	REQ'D: 4	
ELEVATED PLAY ACTIVITIES ACCESSIBLE BY TRANSFER:	7	REQ'D: 0	
ELEVATED PLAY ACTIVITIES ACCESSIBLE BY RAMP:	0	REQ'D: 0	
GROUND LEVEL ACTIVITY TYPE:	2	REQ'D: 2	
GROUND LEVEL ACTIVITY QUANTITY:	2	REQ'D: 2	
NOTES:			
1. USE ZONES FINISH SURFACE OF PLAYGROUND COMPLIES WITH ASTM F1292-99.			
2. GROUND SURFACING COMPLIES WITH ASTM 1951-99			
3. PLAYGROUND EQUIPMENT SHALL COMPLY WITH ASTM F1487-98.			
4. THIS PLAY AREA MEETS CBC SECTION 11B-1008.			
CRITICAL FALL HEIGHT : 5'-0"			



NORTH



Civic Park

Burney, CA

PERIMETER:	As Shown	VERSION 002
SITE AREA:	As Shown	DATE: 7/19/2024
CRITICAL FALL HEIGHT:	As Shown	DRAWN BY: CG
DESIGN CONCEPT		FILE: 24_3665_CIVIC PARK_002.DWG



ALL DRAWINGS ARE SUBJECT TO CHANGE AND SHOULD BE REVIEWED BEFORE FINAL SALE.  
ALL SITE DIMENSIONS WILL NEED TO BE VERIFIED PRIOR TO SALE AND INSTALLATION.

# Preliminary Draft



Colors Used In Rendering:



## 2-5 PLAY STRUCTURE

\*Colors shown in rendering are for illustrative purposes only. Actual color and pattern may vary slightly.

# Preliminary Draft



2-5 PLAY STRUCTURE

\*Colors shown in rendering are for illustrative purposes only. Actual color and pattern may vary slightly.

Preliminary Draft



2-5 PLAY STRUCTURE

\*Colors shown in rendering are for illustrative purposes only. Actual color and pattern may vary slightly.

# Preliminary Draft



Colors Used In Rendering:

5-12 PLAY STRUCTURE

\*Colors shown in rendering are for illustrative purposes only. Actual color and pattern may vary slightly.

-  Dark Gray Decks
-  Metallic Gray
-  Chartreuse
-  Teal
-  Light Gray

Preliminary Draft



5-12 PLAY STRUCTURE

\*Colors shown in rendering are for illustrative purposes only. Actual color and pattern may vary slightly.



Preliminary Draft



5-12 PLAY STRUCTURE

\*Colors shown in rendering are for illustrative purposes only. Actual color and pattern may vary slightly.